



PARTS LIST

- **CLASSIC**
- **COMMANDER**
- **COMMERCIAL PRO**
- **XL**
- **Z-10**

CONTENTS

Chassis Unit - All Cyclone Rake Models2

Collector Unit

 Classic.....3

 Commander4

 Commercial PRO, XL & Z-105

Cyclone Rake Single Wheels6

Cyclone Rake Dual-PRO Wheels.....6

Mower Deck Adapter (MDA) & Deck Hose

 Classic.....7

 Commander, Commercial PRO & XL8

 Z-109

Accessories

 Classic.....10

 Commander, Commercial PRO & XL11

 Z-1012

 All Cyclone Rake Models.....13

 Power-Lift Unloader14

Engine - Briggs & Stratton XR950-PRO16

Blower Unit - Briggs & Stratton XR950-PRO17

Engine - Briggs & Stratton 6.5HP Vanguard Cyclonic18

Blower Unit - Briggs & Stratton 6.5HP Vanguard Cyclonic.....19

Engine - Briggs & Stratton 8HP & 10HP Vanguard - Pull-Start.....20

Engine - Briggs & Stratton 8HP & 10HP Vanguard - Electric Start.....21

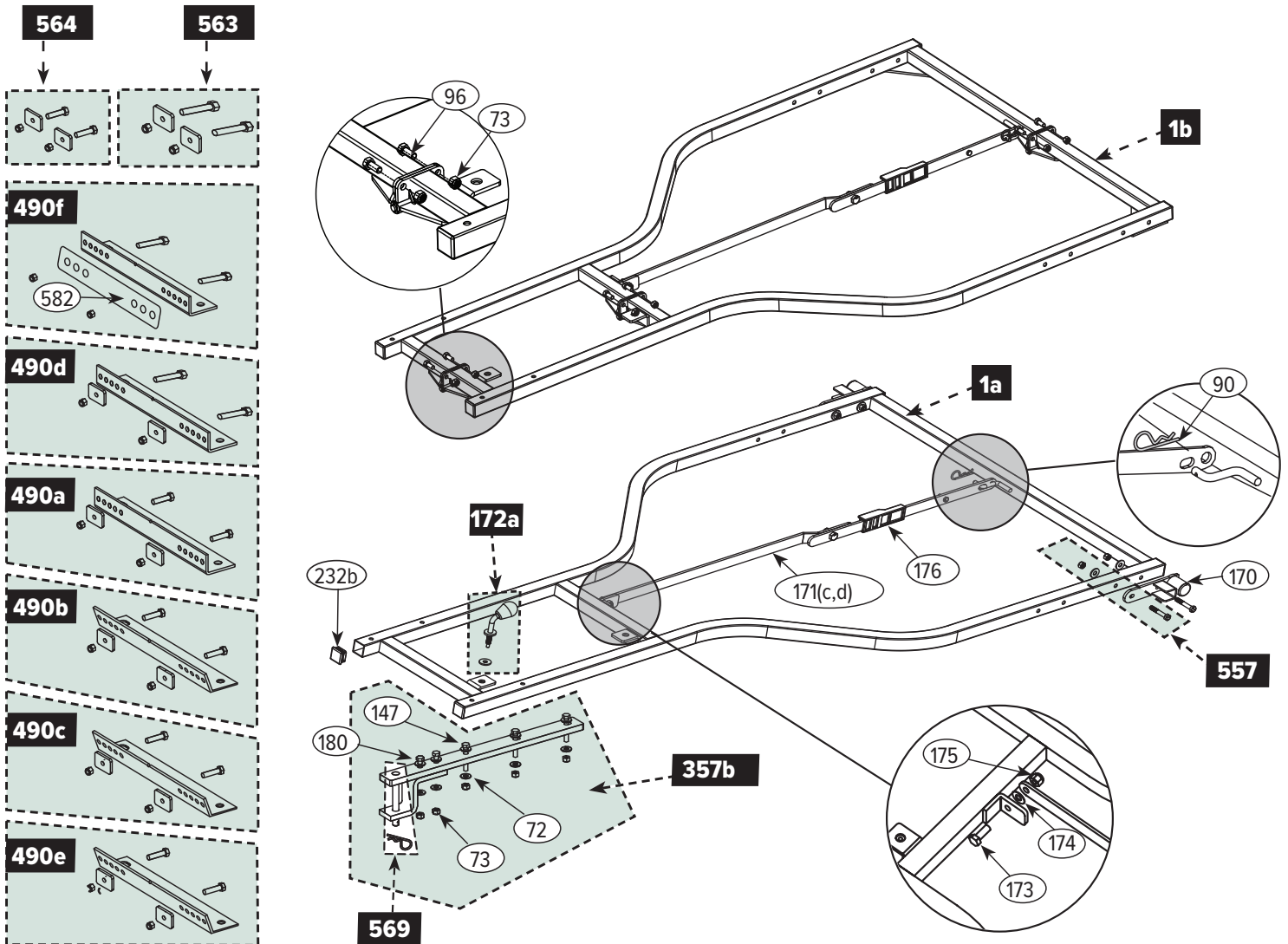
Blower Unit - Briggs & Stratton 8HP & 10HP Vanguard Engines22

Owner's Kit - All Cyclone Rake Models23

CHASSIS UNIT - ALL CYCLONE RAKES

Ref. #	Part Name	Part #
1a	Chassis Unit, complete as boxed - Classic & Commander	01-01-600
1b	Chassis Unit, (folded) complete as boxed - Commercial PRO, XL & Z-10	02-04-700
72	5/16" Washer	01-01-152
73	5/16-18 Nylon lock nut	01-01-151
90	Bridge pin, large (0.118 dia. x 2.4" long)	01-01-203
96	5/16-18 x .75" bolt	01-01-201
147	5/16-18 x 2.5" bolt	01-01-165
170	Hinge block	01-02-014
171c	Dump link assembly, w/slider bracket - Classic & Commander - black	01-02-584
171d	Dump link assembly, w/slider bracket - Commercial PRO, XL & Z-10 - black	02-02-584
172a	Engine clamp handle w/rubber washers (set of 2)	01-02-681
173	M10 x 25 mm Bolt, for dump linkage	01-01-802
174	3/8" I.D. x 1" O.D. Nylon washer	01-01-196
175	M10 Nylon lock nut	01-01-803

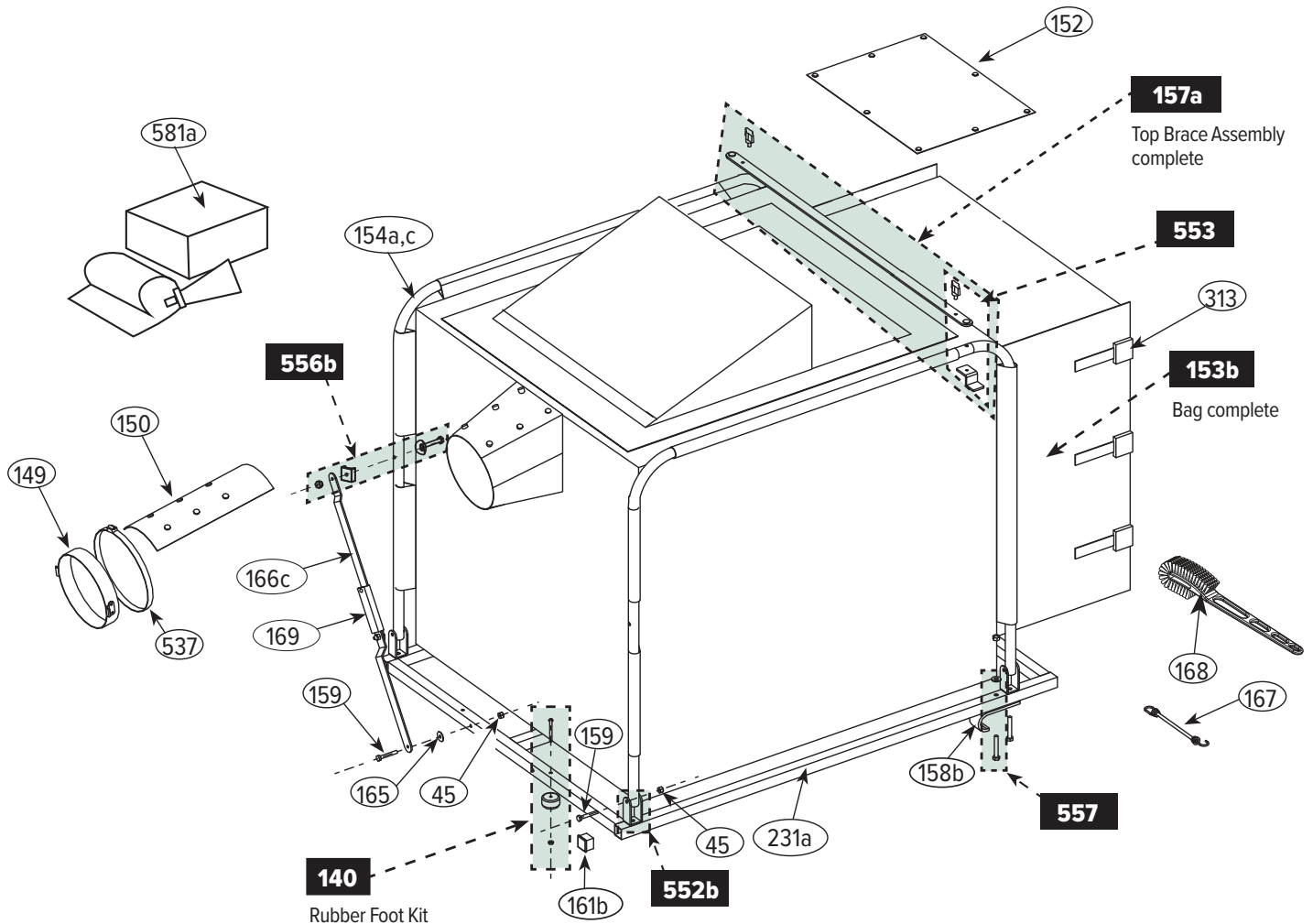
Ref. #	Part Name	Part #
176	Slider bracket for dump link	01-01-1856
180	5/16-18 x 1.5" Bolt	01-01-482
232b	1.25" Cap plug - black	09-01-056
357b	Extended Hitch leaves- (set of 2)	01-04-154
490a	90° Hitch bar w/hardware	208-090A
490b	70° Hitch bar w/hardware	208-070A
490c	55° Hitch bar w/hardware	208-055A
490d	90° Hitch bar w/long bolts	208-090XA
490e	80° Hitch bar w/hardware	208-080A
490f	90° Hitch bar w/reinforced plate	208-090ZA
557	5/16-18 x 2" Bolt, nut & washer	01-02-124
563	Standard Hitch Bar hardware w/standard bolts (set of 2)	01-02-1434
564	Standard Hitch Bar hardware w/long bolts (set of 2)	01-02-683
569	1/2" x 4.5" Hitch pin & 2-1/2" Bridge pin (set of 2)	01-02-127
582	Reinforcing Plate	01-01-1899



COLLECTOR UNIT - CLASSIC

Ref. #	Part Name	Part #
2a	Collector Unit, complete as boxed - Classic	01-01-601
45	1/4-20 Nylon lock nut	01-01-157
140	Rubber foot kit w/hardware (set of 2)	01-02-070
149	Metal bag collar assembly, w/strikes	01-02-250
150	Vinyl neck insert, for collector bag	02-01-305
152	Rear vinyl insert, for collector bag	01-01-568
153b	Collector Bag complete- Classic	01-03-308
154a	1 Three-Piece Side tube as boxed - Classic	01-03-2195
154c	2 Three-Piece Side tubes as boxed - Classic	01-03-2196
157a	Top brace assembly complete as boxed - Classic	01-03-360
158b	J-hook	01-01-025
159	1/4-20 x 1.75" Bolt, for side tube hinge bracket	01-01-598
161b	1" Cap plug - black	09-01-055
165	1/4" I.D. x 1" O.D. Nylon washer	01-01-158
166c	Side link assembly w/slider bracket - Classic - black	01-02-585
167	1/4" x 12" Short bungee, for collector frame	01-01-242
168	Top screen brush	01-01-500
169	Slider bracket for side link - black	01-01-1855

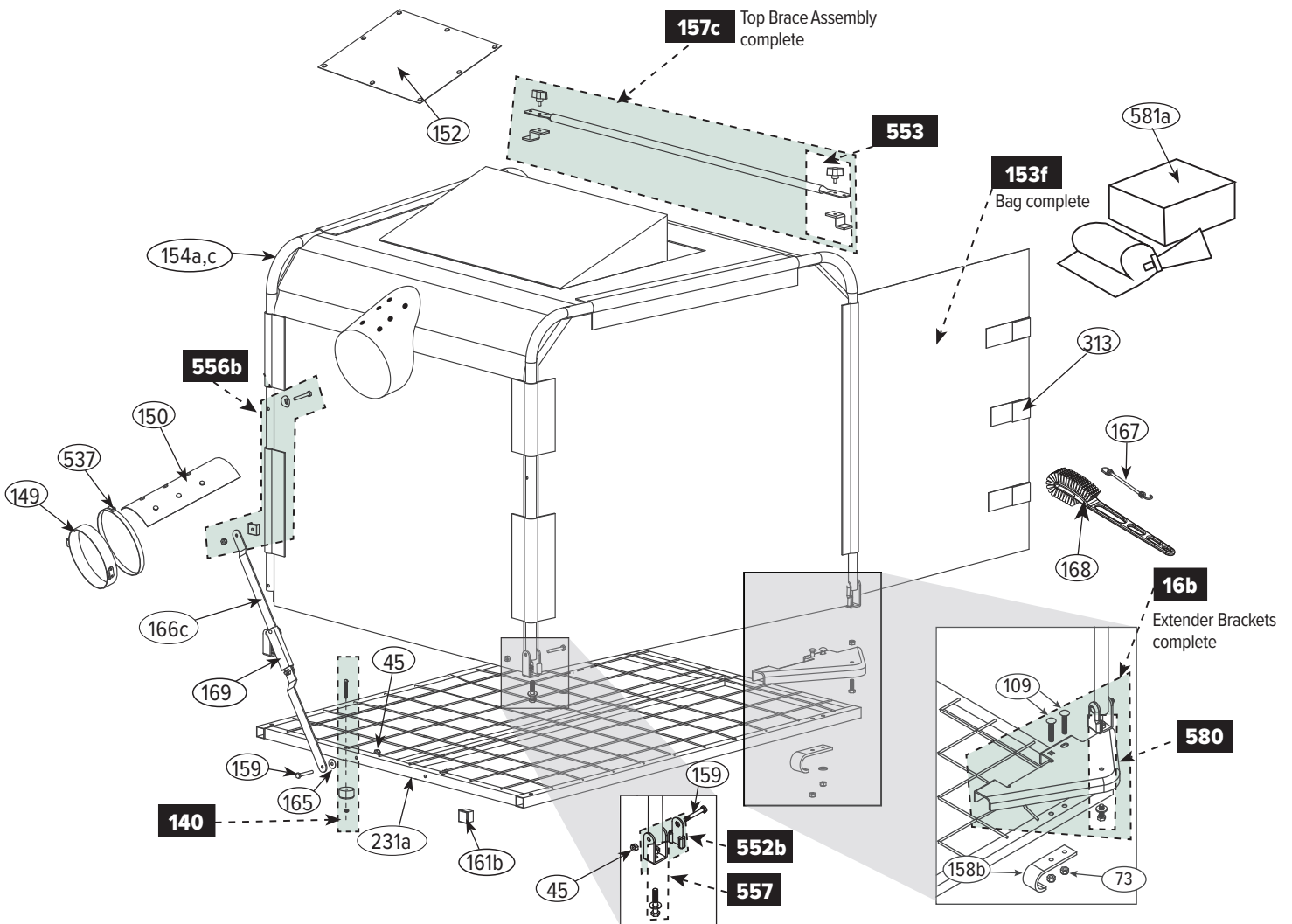
Ref. #	Part Name	Part #
231a	Collector frame complete as boxed - Classic	03-04-001
313	Buckle set, male & female	01-02-472
537	Band clamp, for bag collar	01-01-1148
552b	Hinge bracket & guard - black	01-02-679
553	Top brace bracket & Clamp knob (set of 2)	01-02-120
556b	Side tube spacers w/nut & bolt - black	01-02-680
557	5/16-18 x 2" bolt, nut & washer	01-02-124
581a	Collector Bag repair kit - green	01-04-152



COLLECTOR UNIT - COMMANDER

Ref. #	Part Name	Part #
2c.....	Collector Unit, complete as boxed - Commander	03-01-601
16b.....	Extender bracket, complete pair as boxed - black.....	05-03-040
45	1/4"-20 Nylon lock nut	01-01-157
73	5/16-18 Nylon lock nut.....	01-01-151
109	5/16-18 x 1.75" Carriage bolt	01-01-1034
140.....	Rubber foot kit w/hardware (set of 2).....	01-02-070
149.....	Metal bag collar assembly, w/strikes.....	01-02-250
150	Vinyl neck insert, for collector bag	02-01-305
152.....	Rear vinyl insert, for collector bag	01-01-568
153f	Collector Bag complete - Commander.....	03-03-308
154a	1 Three-Piece Side tube as boxed - Cmmander.....	01-03-2195
154c.....	2 Three-Piece Side tube as boxed - Commander.....	01-03-2196
157c	Top brace assembly complete as boxed	
	- Commander	01-03-039
158b	J-hook	01-01-025
159.....	1/4-20 x 1.75" Bolt, for side tube hinge bracket	01-01-598
161b	1" Cap plug - black.....	09-01-055
165.....	1/4" I.D. x 1" O.D. Nylon washer	01-01-158

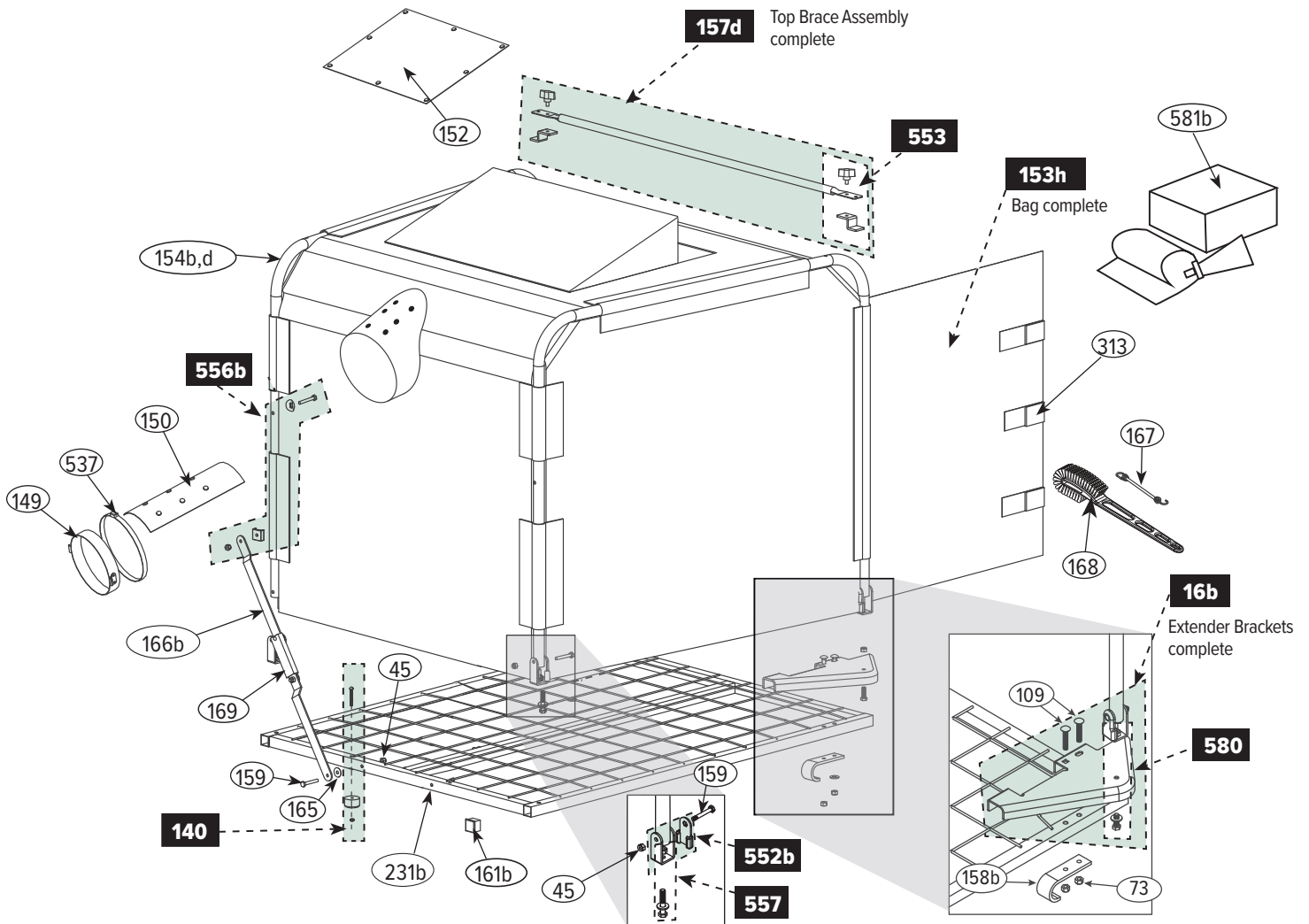
Ref. #	Part Name	Part #
166c.....	Side link assembly w/slider bracket	
	- Commander - black.....	01-02-585
167.....	1/4" x 12" Short bungee, for collector frame.....	01-01-242
168.....	Top screen brush	01-01-500
169.....	Slider bracket for side link - black.....	01-01-1855
231a	Collector frame complete as boxed - Commander	03-04-001
313.....	Buckle set, male & female	01-02-472
537	Band clamp, for bag collar.....	01-01-1148
552b.....	Hinge bracket & guard - black.....	01-02-679
553.....	Top brace bracket & Clamp knob (set of 2)	01-02-120
556b ...	Side tube spacers w/nut & bolt - black	01-02-680
557	5/16-18 x 2" Bolt, nut & washer	01-02-124
580.....	5/16-18 x 1" Bolt, nut & washer	01-02-157
581a	Collector Bag Repair Kit - green.....	01-04-152



COLLECTOR UNIT - COMMERCIAL PRO, XL & Z-10

Ref. #	Part Name	Part #
2d	Collector Unit, complete as boxed - Commercial PRO, XL & Z-10	05-01-601
16b	Extender bracket, complete pair as boxed - black	05-03-040
73	5/16-18 Nylon lock nut	01-01-151
45	1/4-20 Nylon lock nut	01-01-157
109	5/16-18 x 1.75" Carriage bolt	01-01-1034
140	Rubber foot kit w/hardware (set of 2)	01-02-070
149	Metal bag collar assembly, w/strikes	01-02-250
150	Vinyl neck insert, for collector bag	02-01-305
152	Rear vinyl insert, for collector bag	01-01-568
153h	Collector Bag complete- Commercial PRO, XL & Z-10	05-03-308
154b	1 Side tube as boxed - Commercial PRO, XL, & Z-10 (3 pc)	02-03-2195
154d	2 Side tube as boxed - Commercial PRO, XL, & Z-10 (6 pc)	02-03-2196
157d	Top brace assembly complete as boxed - Commercial PRO, XL & Z-10	02-03-004
158	J-hook	01-01-025

Ref. #	Part Name	Part #
159	1/4-20 x 1.75" Bolt, side tube hinge bracket	01-01-598
161b	1" Cap plug - black	09-01-055
165	1/4" I.D. x 1" O.D. Nylon washer	01-01-158
166d	Side link assembly w/slider bracket - Commercial PRO, XL & Z-10 - black	02-02-585
167	1/4" x 12" Short bungee, for collector frame	01-01-242
168	Top screen brush	01-01-500
169	Slider bracket for side link - black	01-01-1855
231c	Collector frame complete as boxed - black - Commercial PRO, XL & Z-10	05-04-001
313	Buckle set, male & female	01-02-472
537	Band clamp, for bag collar	01-01-1148
552b	Hinge bracket & guard - black	01-02-679
553	Top brace bracket & Clamp knob (set of 2)	01-02-120
556b	Side tube spacers w/nut & bolt - black	01-02-680
557	5/16-18 x 2" Bolt, nut & washer	01-02-124
580	5/16-18 x 1" Bolt, nut & washer	01-02-157
581b	Collector Bag Repair Kit - black	01-04-153



CYCLONE RAKE SINGLE WHEELS

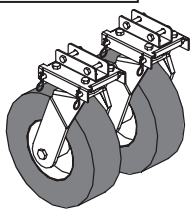
CYCLONE RAKE DUAL-PRO WHEELS

Ref. #	Part Name	Part #
6	Single wheels w/caster pads (set of 2)	01-04-031
72	5/16" Washer	01-01-152
73	5/16-18 Nylon lock nut	01-01-151
185	10mm x 120mm Clevis pin, Single wheel for caster pad,	01-01-244
187	Single wheel fork complete w/axle tube & caster pad	01-01-429
192	Single wheel complete, w/caster pad	01-02-409
195	Caster pad, complete w/hardware	01-03-065
196	1/2-13 Nylon lock nut (axle nut)	01-01-823
201	Set of 4 bow tie cotter pins	01-02-2198
202	Hardware for Caster Pad (4 bolts w/nuts, 2 Bow Tie, 2 Clevis)	01-03-2198
197	1/2-13 x 5.5" Hex bolt (axle bolt)	01-01-822
221	Single tire & hub assembly	01-01-826
240	Valve stem cap	01-01-597
451	Inner tube (includes valve stem & cap)	01-01-399
456	Axle tube	01-01-881
519	5/16-18 x 2.25" Bolt	01-01-1310

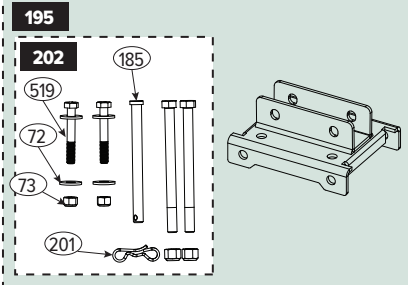
Ref. #	Part Name	Part #
72	5/16" Washer	01-01-152
73	5/16-18 Nylon lock nut	01-01-151
185	10mm x 120mm Clevis pin, Dual-PRO wheel for caster pad,	01-01-244
189	Dual wheel fork complete w/axle tube & caster pad	01-04-428
193	Dual wheel complete, w/caster pad	01-04-070
195	Caster pad, complete w/hardware	01-03-065
201	Set of 4 bow tie cotter pins	01-02-2198
202	Hardware for Caster Pad (4 bolts w/nuts, 2 Bow Tie, 2 Clevis)	01-03-2198
198	5/8-11 Nylon lock nut, Dual-PRO wheel (axle nut)	01-01-824
199	5/8-11 x 10 Bolt, Dual-PRO wheel (axle bolt)	01-01-825
217	Dual-PRO Super Wheels w/caster pads (set of 2)	01-04-050
221	Single tire & hub assembly	01-01-826
223	Axle tube, Dual-PRO wheel	01-01-828
240	Valve stem cap	01-01-597
451	Inner tube (includes valve stem & cap)	01-01-399
510	Dual wheel connector	01-02-477
519	5/16-18 x 2.25" Bolt	01-01-1310

6 Single Wheels, as boxed, set of 2 w/caster pads.

Recommended:
25 PSI per tire

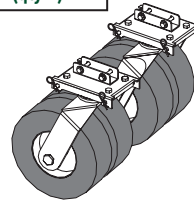


192 Single Wheel Assembly Complete with caster pad

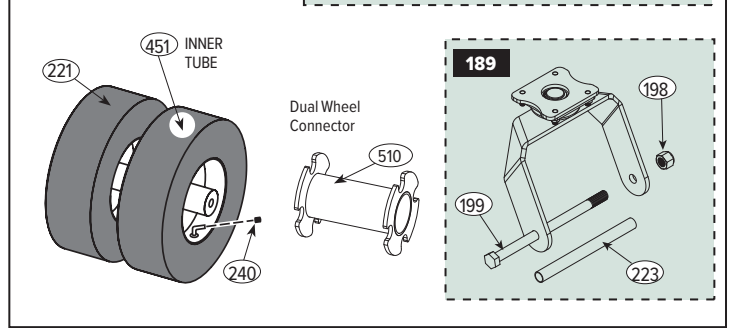
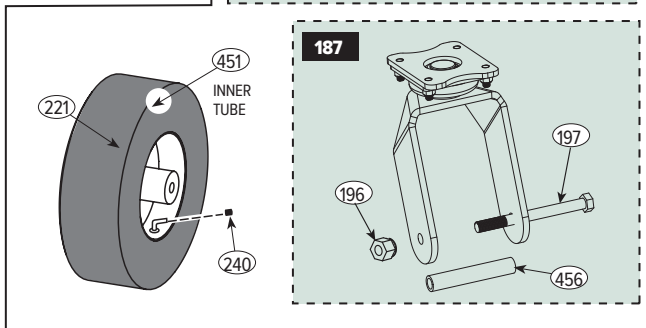
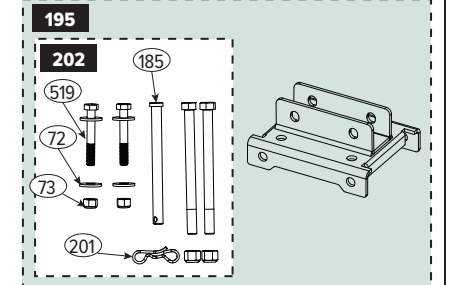


217 Dual-PRO Super Wheels, as boxed set of 2 w/caster pads.

Recommended:
15 PSI per tire
(qty 4)

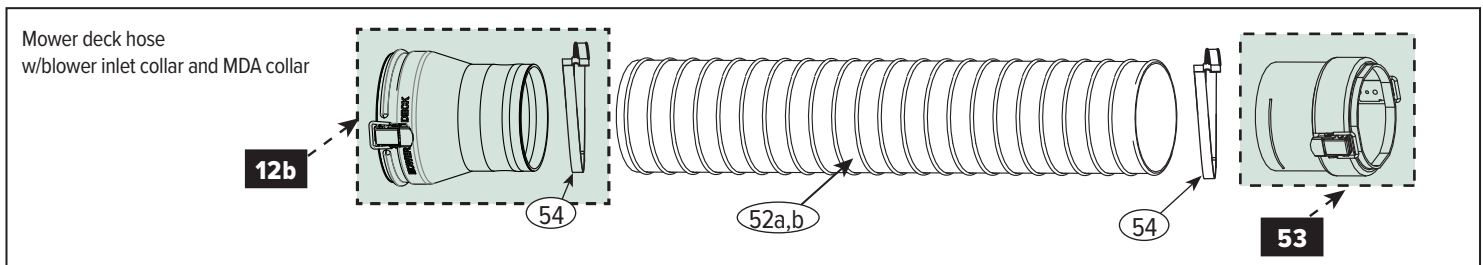
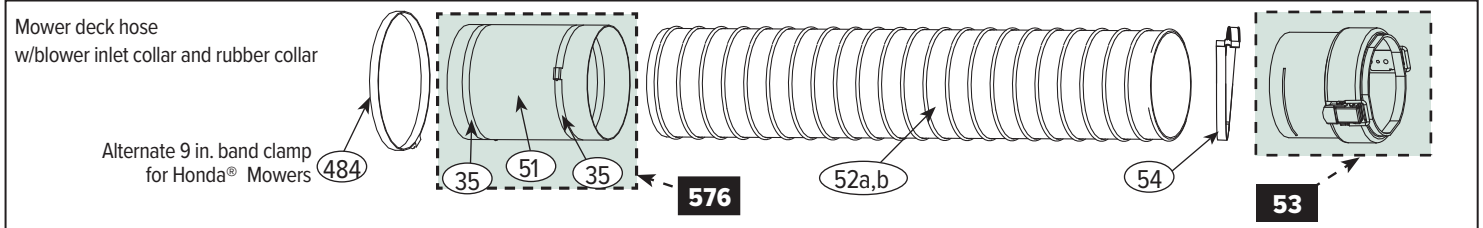
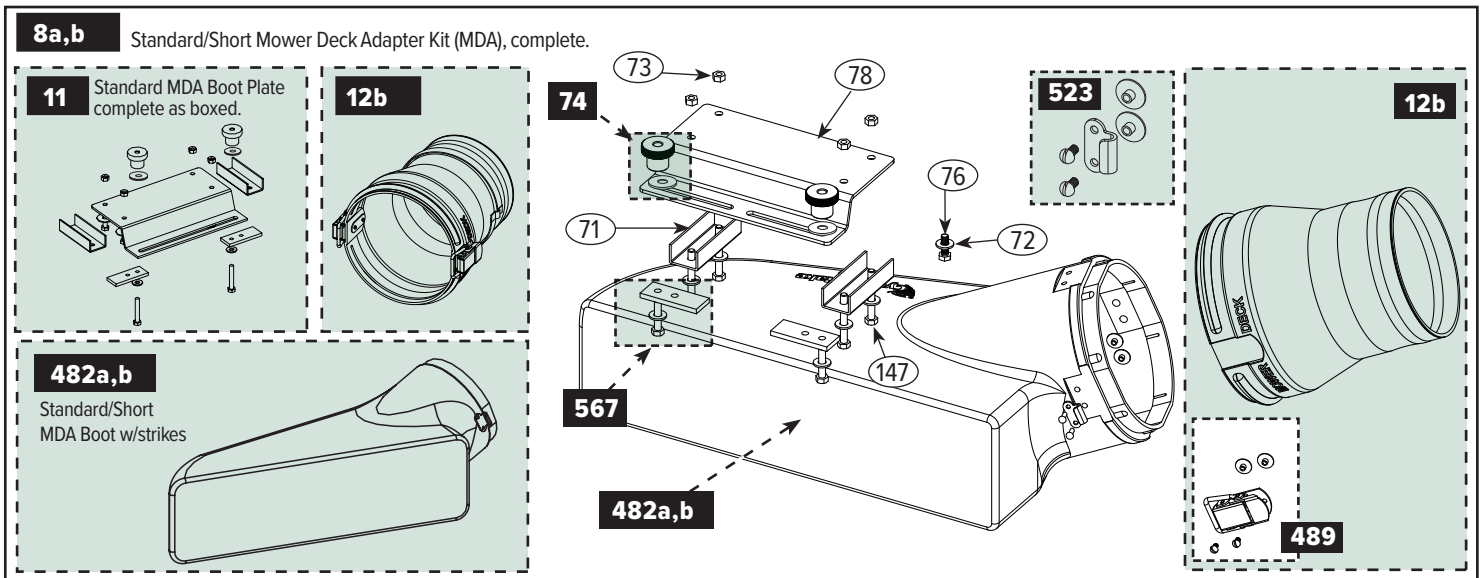


193 Dual-PRO Wheel Assembly with caster pad



MOWER DECK ADAPTER (MDA) & DECK HOSE - CLASSIC

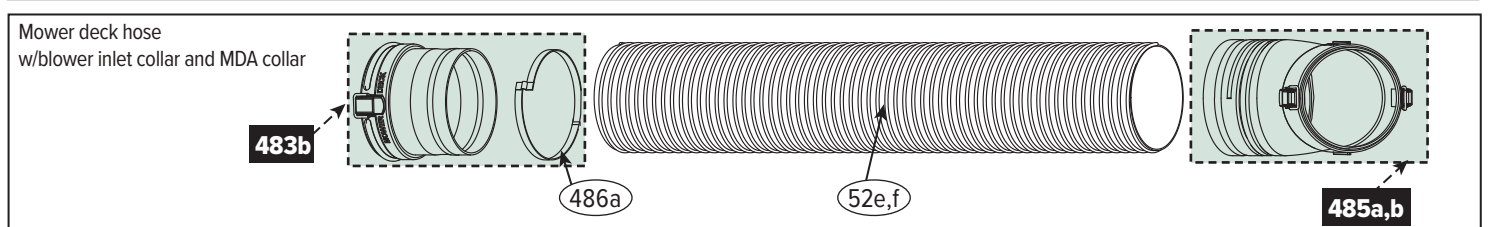
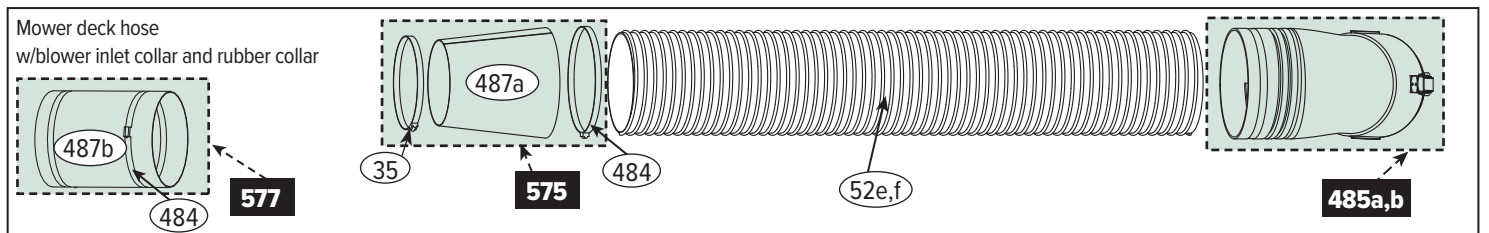
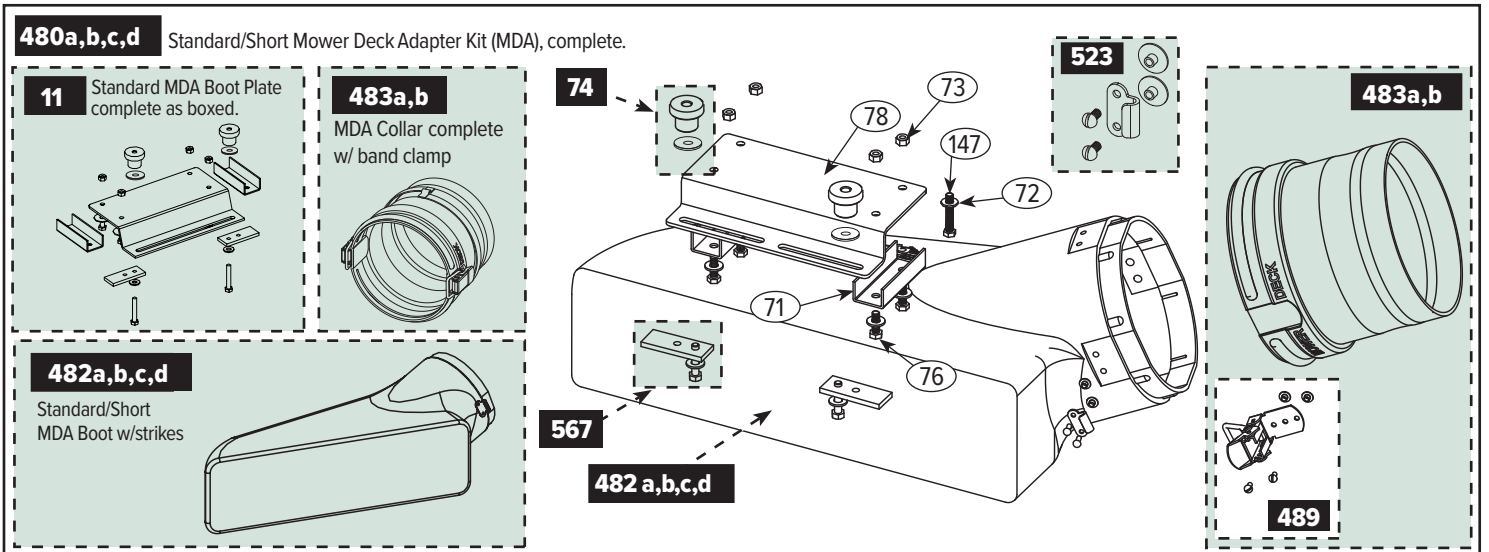
Ref. #	Part Name	Part #	Ref. #	Part Name	Part #
8a	Standard MDA Kit, complete w/7" x 8" collar.....	206	78	Standard MDA boot plate	01-01-069
8b	Short MDA Kit, complete w/7" x 8" collar.....	206G	147	5/16-18 x 2.5" Hex bolt	01-01-165
11	Standard MDA boot plate complete as boxed	01-04-020	484	9" Band clamp, flat type	01-01-1152
12b	7" x 8" MDA collar complete w/band clamp.....	01-02-486	482a	Standard MDA boot w/strikes (uncut)	01-02-143
35	7" Band clamp, flat type.....	01-01-227	482b	Short MDA boot w/strikes (uncut)	01-02-145
51	Rubber collar for 7" dia. deck hose.....	01-01-243	489	Latch w/hardware & T-nuts (set of 2)	01-03-045
52a	Hose by the foot - PVC (green) 7" dia - available in 5, 7, 10, 12 & 25 ft.....	RPVC-07-LL	523	Standard strike w/hardware (set of 4).....	01-02-564
52b	Hose by the foot - Urethane (yellow) 7" dia - available in 5, 7, 10, 12 & 25 ft.....	RPUR-07-LL	567	MDA Support block w/bolt & washer (set of 2)	01-02-125
53	7" x 7" Blower inlet collar, complete w/latches.....	01-01-713	576	7" x 7" Straight rubber collar kit	01-02-011
54	7" Band clamp, bridge type.....	01-02-023			
71	Boot plate spacer	01-01-495			
72	5/16" Washer.....	01-01-152			
73	5/16-18 Nylon lock nut.....	01-01-151			
74	Clamp knob w/rubber washers, for boot plate (set of 2).....	01-02-291			
76	5/16-18 x 1" Bolt.....	01-01-171			



MDA & DECK HOSE - COMMANDER & COMMERCIAL PRO & XL

Ref. #	Part Name	Part #
11.....	Standard MDA boot plate complete as boxed	01-04-020
35.....	7" Band clamp, flat type.....	01-01-227
52e.....	Hose by the foot - PVC (green) 8"dia - available in 4, 5, 6, 8, 10, 12 & 25 ft.....	RPVC-08-LL
52f.....	Hose by the foot - Urethane (yellow) 8"dia - available in 4, 5, 6, 8, 10, 12 & 25 ft.....	RPUR-08-LL
71.....	Boot plate spacer	01-01-495
72.....	5/16" Washer.....	01-01-152
73.....	5/16-18 Nylon lock nut.....	01-01-151
74.....	Clamp knob w/rubber washers, for boot plate (set of 2).....	01-02-291
76.....	5/16-18 x 1" Bolt.....	01-01-171
78.....	Standard MDA boot plate	01-01-069
147.....	5/16-18 x 2.5" Hex bolt	01-01-165
480a....	Standard MDA Kit, complete - Commander & Commercial PRO.....	230
480b....	Standard MDA Kit, complete - XL.....	240
480c....	Short MDA Kit, complete - Commander & Commercial PRO.....	230G
480d....	Short MDA Kit, complete - XL.....	240G

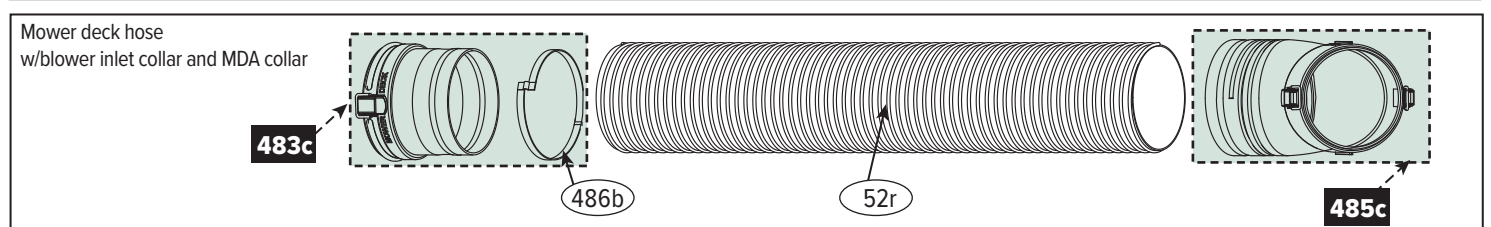
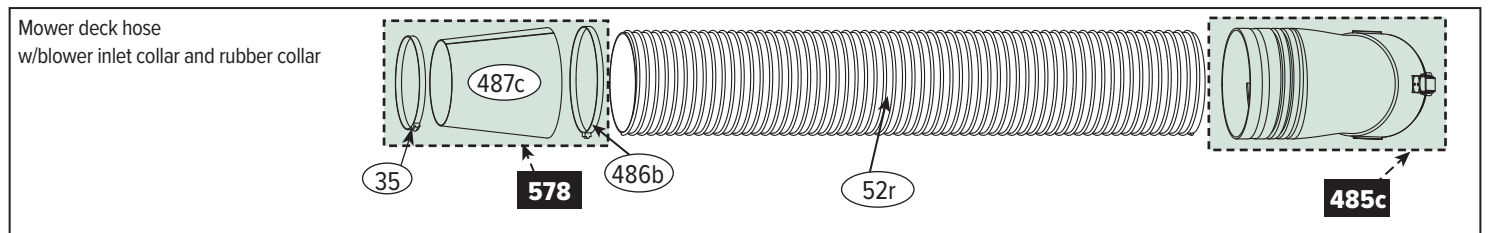
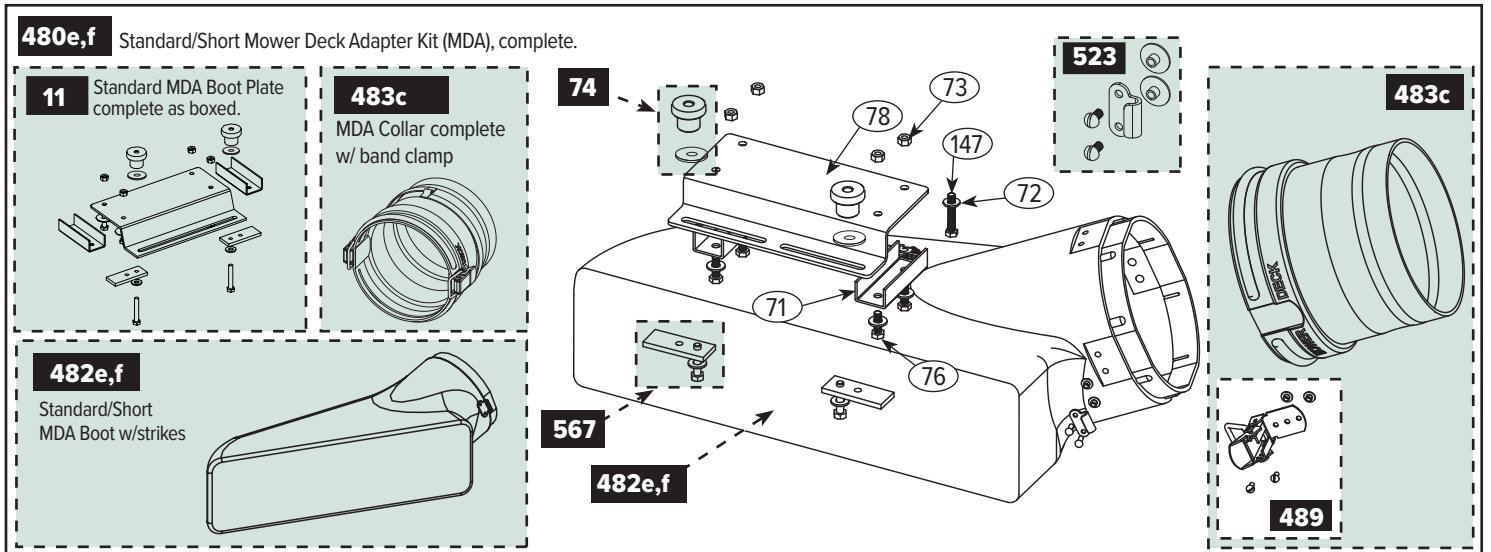
Ref. #	Part Name	Part #
482a....	Standard MDA boot w/strikes (uncut) - Commander & Commercial PRO.....	01-02-143
482b....	Short MDA boot w/strikes (uncut) - Commander & Commercial PRO.....	01-02-145
482c....	Standard MDA boot w/strikes (uncut) - XL.....	05-02-143
482d....	Short MDA boot w/strikes (uncut) - XL.....	05-02-145
483a....	8" MDA collar complete w/ band clamp	01-02-080
483b....	8" MDA collar complete w/ band clamp - XL.....	05-02-080
484.....	9" Band clamp, flat type	01-01-1152
485a....	8" x 8" Blower inlet collar, complete w/latches, 8" dia. - Commander & Commercial PRO.....	01-02-059
485b....	8" x 8" Blower inlet collar, complete w/latches, 8" dia. - XL.....	05-02-059
486a....	8" Band clamp, bridge type.....	01-01-1154
487a....	Tapered rubber collar for deck hose	01-01-1151
487b....	8" x 8" rubber collar for deck hose	01-01-1705
489.....	Latch w/hardware (set of 2).....	01-03-045
523.....	Standard strike w/hardware (set of 4).....	01-02-564
567.....	MDA Support Block w/bolt & washer (set of 2).....	01-02-125
575.....	7" x 8" Tapered rubber collar kit	01-02-012
577.....	8" x 8" Straight rubber collar kit.....	01-02-013



MDA & DECK HOSE - CYCLONE RAKE Z-10

Ref. #	Part Name	Part #
11.....	Standard MDA boot plate complete as boxed	01-04-020
35.....	7" Band clamp, flat type.....	01-01-277
52r.....	Hose by the foot - Urethane (yellow) 10" dia - available in 3.5, 4, 5, 6, 8, 10ft	RPUR-10-LL
55.....	Rubber washer	01-01-1990
71.....	Boot plate spacer	01-01-495
72.....	5/16" Washer.....	01-01-152
73.....	5/16-18 Nylon lock nut.....	01-01-151
74.....	Clamp knob w/rubber washers, for boot plate (set of 2).....	01-02-291
76.....	5/16-18 x 1" Bolt.....	01-01-171
78.....	Standard MDA boot plate	01-01-069
147.....	5/16-18 x 2.5" Hex bolt	01-01-165
480e.....	Standard MDA Kit, complete, 10" - Z-10	260
480f.....	Short MDA Kit, complete, 10" - Z-10	260G
482e.....	Standard MDA boot w/strikes (uncut), 10" - Z-10	06-02-143
482f.....	Short MDA boot w/strikes (uncut), 10" - Z-10	06-02-145
483c.....	MDA collar w/ Band Clamp - Z-10	06-02-080

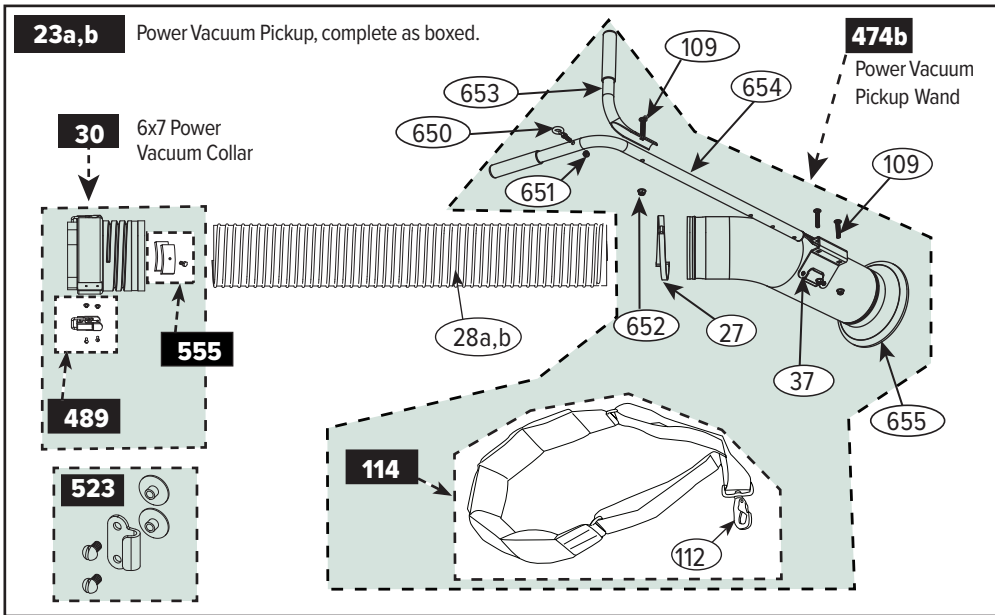
Ref. #	Part Name	Part #
485c.....	10" x 10" Blower inlet collar, complete w/latches - Z-10	06-02-059
486b.....	10" Band clamp, bridge type	01-01-1716
487c.....	Tapered rubber collar for deck hose - Z-10.....	01-01-1738
489.....	Latch w/hardware (set of 2).....	01-03-045
523.....	Standard strike w/hardware (set of 4).....	01-02-564
567.....	MDA Support Block w/bolt & washer (set of 2).....	01-02-125
578.....	10" x 7" Tapered rubber collar kit.....	01-02-015



ACCESSORIES - CLASSIC

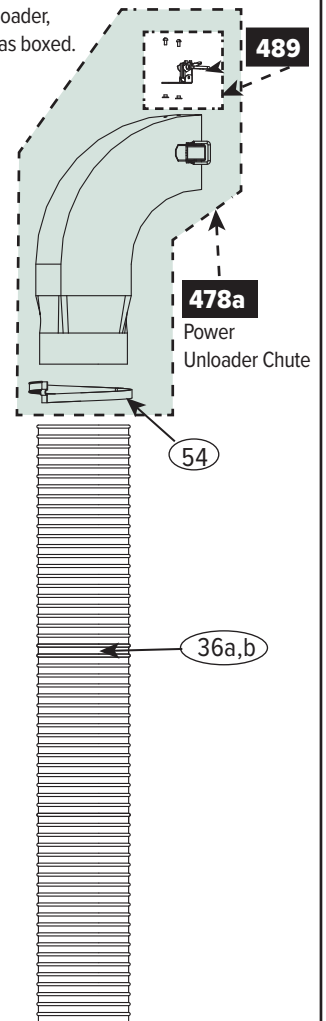
Ref. #	Part Name	Part #	Ref. #	Part Name	Part #
23a	Power Vacuum Pickup, complete as boxed - PVC (green)	201	110b	15 ft. Estate Vacuum extension hose complete as boxed - Urethane (yellow), 6" dia.	01-02-465
23b	Power Vacuum Pickup, complete as boxed - Urethane (yellow)	214	112	Spring clip	01-01-1109
27	6" Band clamp, bridge type	01-02-024	114	Strap w/ spring clip	01-04-055
28a	15 ft. - PVC (green), 6" dia	RPVC-06-15	474b	Wand, complete w/handles & shoulder strap	01-04-2120
28b	15 ft. - Urethane (yellow), 6" dia	RPUR-06-15	477a	Power Unloader, complete as boxed - PVC (green)	226
30	6" x 7" Power Vacuum collar, complete w/latches	01-01-721	477b	Power Unloader, complete as boxed - Urethane (yellow)	215
36a	15 ft. - PVC (green), 7" dia	RPVC-07-15	478a	Power Unloader chute, complete w/latches	01-02-078
36b	15 ft. - Urethane (yellow), 7" dia	RPUR-07-15	489	Latch w/hardware (set of 2)	01-03-045
37	10-24 x 1/2" Round head screw	01-01-173	523	Standard strike w/hardware (set of 4)	01-02-564
54	7" Band clamp, bridge type	01-02-023	555	Inner & outer hose clamp w/screw	01-02-122
56	Estate Vacuum Sleeve	01-01-2190	650	1/4"-20 Eye bolt	01-01-2129
100a	Estate Vacuum, complete as boxed - PVC (green)	210	651	1/4"-20 Acorn nut	01-01-2130
100b	Estate Vacuum, complete as boxed - Urethane (yellow)	219	652	5/15"-18 Nylon flange nut	07-01-151
101	Extension collar, complete w/strikes	01-02-047	653	Side handle tube w/grip	01-02-2124
109	5/16-18 x 1.75" Carriage bolt	01-01-1034	654	Handle tube w/grip	01-02-2122
110a	15 ft. Estate Vacuum extension hose complete as boxed - PVC (green), 6" dia.	01-02-464	655	Molded wand inlet w/bracket	01-02-2120

100a,b Estate Vacuum, complete as boxed.

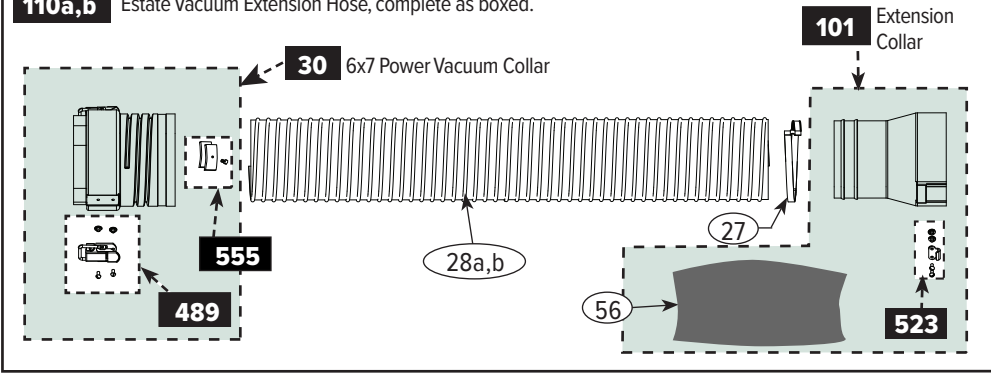


477a,b

Power Unloader, complete as boxed.



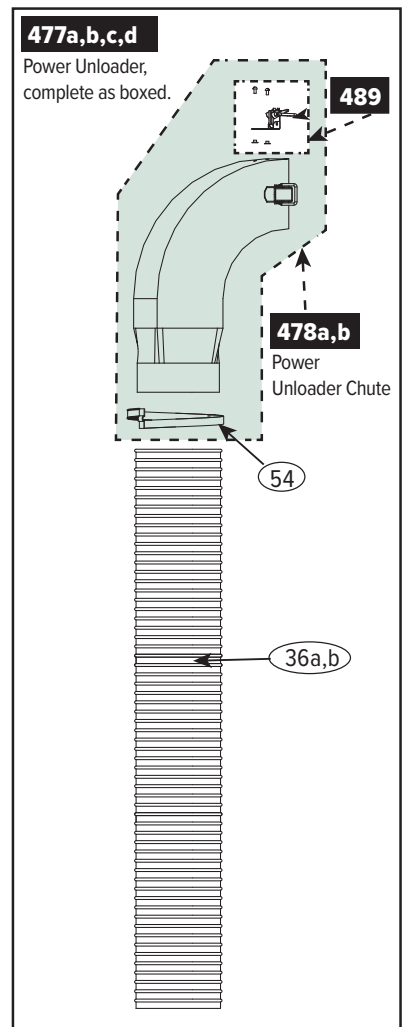
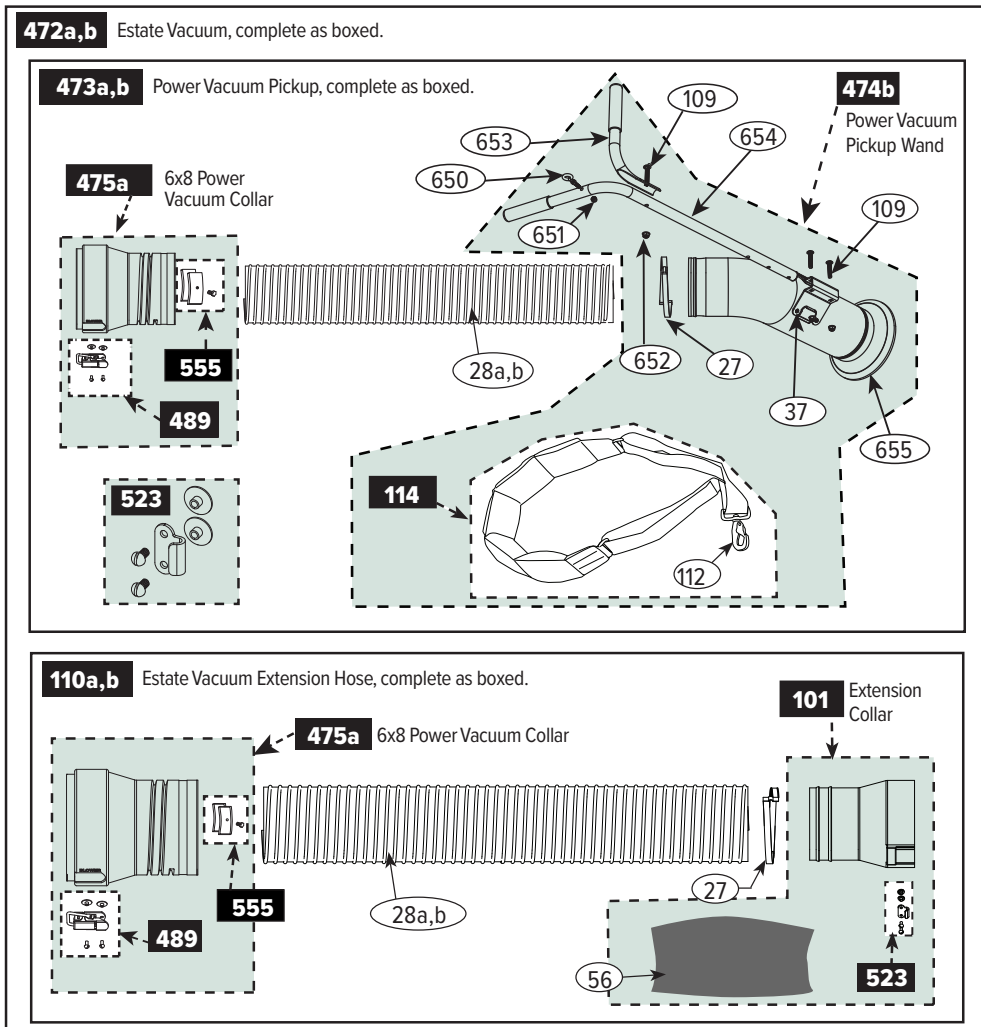
110a,b Estate Vacuum Extension Hose, complete as boxed.



ACCESSORIES - COMMANDER & COMMERCIAL PRO & XL

Ref. #	Part Name	Part #
27	6" Band clamp, bridge type	01-02-024
28a	15 ft. - PVC (green), 6" dia	RPVC-06-15
28b	15 ft. - Urethane (yellow), 6" dia	RPUR-06-15
36a	15 ft. - PVC (green), 7" dia	RPVC-07-15
36b	15 ft. - Urethane (yellow), 7" dia	RPUR-07-15
37	10-24 x 1/2" Round head screw	01-01-173
54	7" Band clamp, bridge type	01-02-023
56	Estate Vacuum Sleeve	01-01-2190
109	5/16-18 x 1.75" Carriage bolt	01-01-1034
112	Spring clip	01-01-1109
114	Strap w/ spring clip	01-04-055
472a	Estate Vacuum, complete as boxed - PVC (green)	227
472b	Estate Vacuum, complete as boxed - Urethane (yellow)	232
473a	Power Vacuum Pickup, complete as boxed - PVC (green)	225
473b	Power Vacuum Pickup, complete as boxed - Urethane (yellow)	229
474b	Wand, complete w/handles & shoulder strap	01-04-2120
475a	6" x 8" Power Vacuum collar, complete w/latches	01-02-137
476	Extension collar, complete w/strikes	01-02-295
477a	Power Unloader, complete as boxed - PVC (green)- Commander & Commercial PRO	226

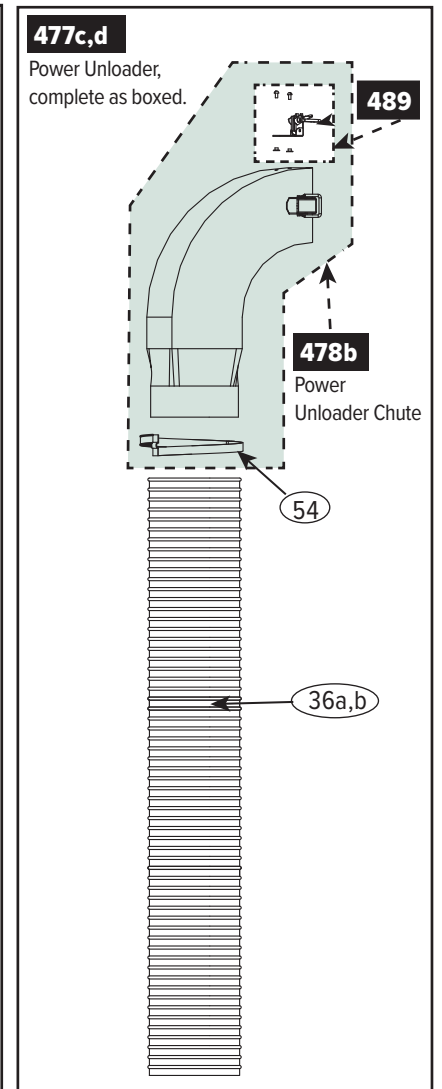
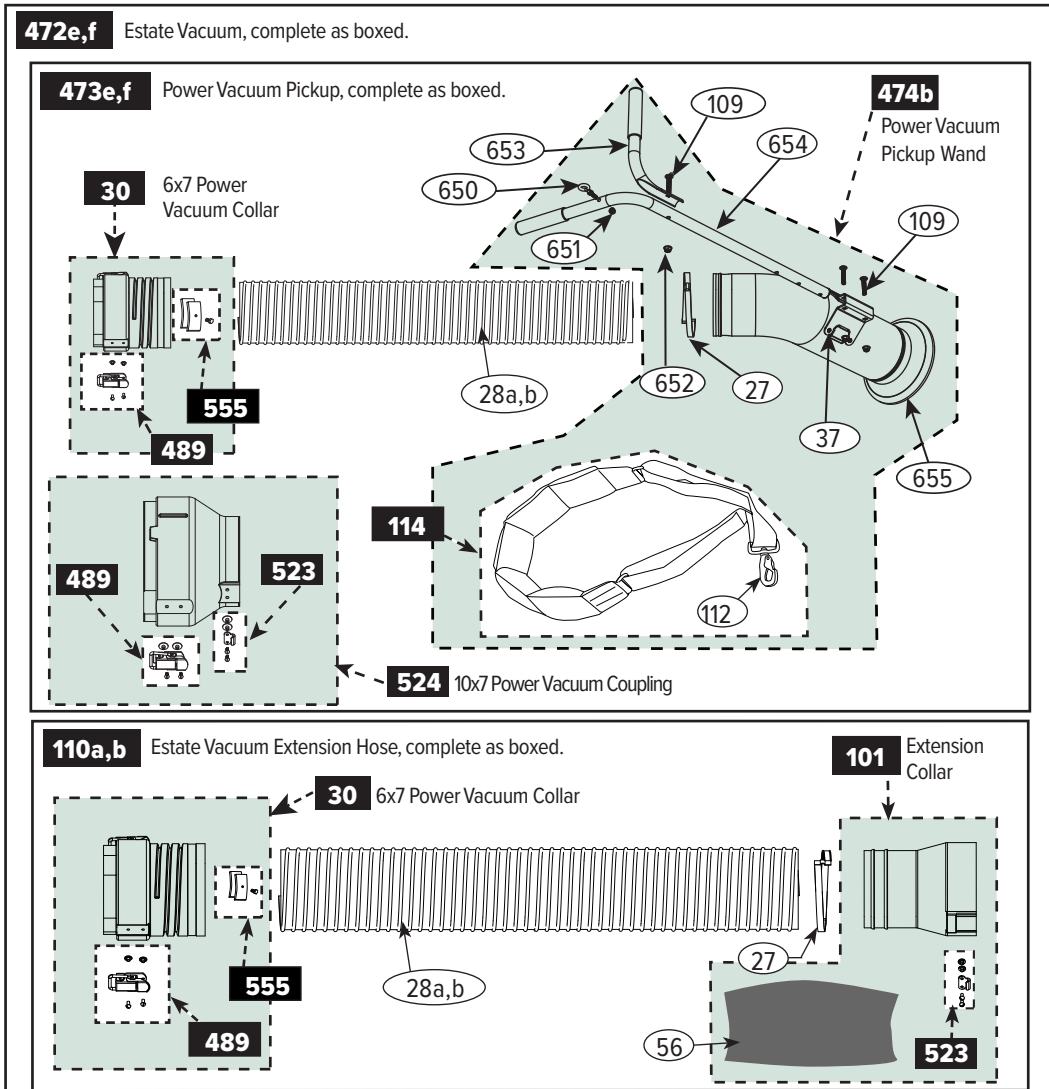
Ref. #	Part Name	Part #
477b	Power Unloader, complete as boxed - Urethane (yellow) - Commander & Commercial PRO	215
477c	Power Unloader, complete as boxed - PVC (green) - XL	236
477d	Power Unloader, complete as boxed - Urethane (yellow) - XL	237
478a	Power Unloader chute, complete w/latches - Commander & Commercial PRO	01-02-078
478b	Power Unloader chute, complete w/latches - XL	05-02-078
479a	15 ft. Estate Vacuum extension hose complete as boxed - PVC (green), 6" dia	01-02-294
479b	15 ft. Estate Vacuum extension hose complete as boxed - Urethane (yellow), 6" dia.	01-02-296
489	Latch w/hardware (set of 2)	01-03-045
523	Standard strike w/hardware (set of 4)	01-02-564
555	Inner & outer hose clamp w/screw	01-02-122
650	1/4"-20 Eye bolt	01-01-2129
651	1/4"-20 Acorn nut	01-01-2130
652	5/15"-18 Nylon flange nut	07-01-151
653	Side handle tube w/grip	01-02-2124
654	Handle tube w/grip	01-02-2122
655	Molded wand inlet w/bracket	01-02-2120



ACCESSORIES - CYCLONE RAKE Z-10

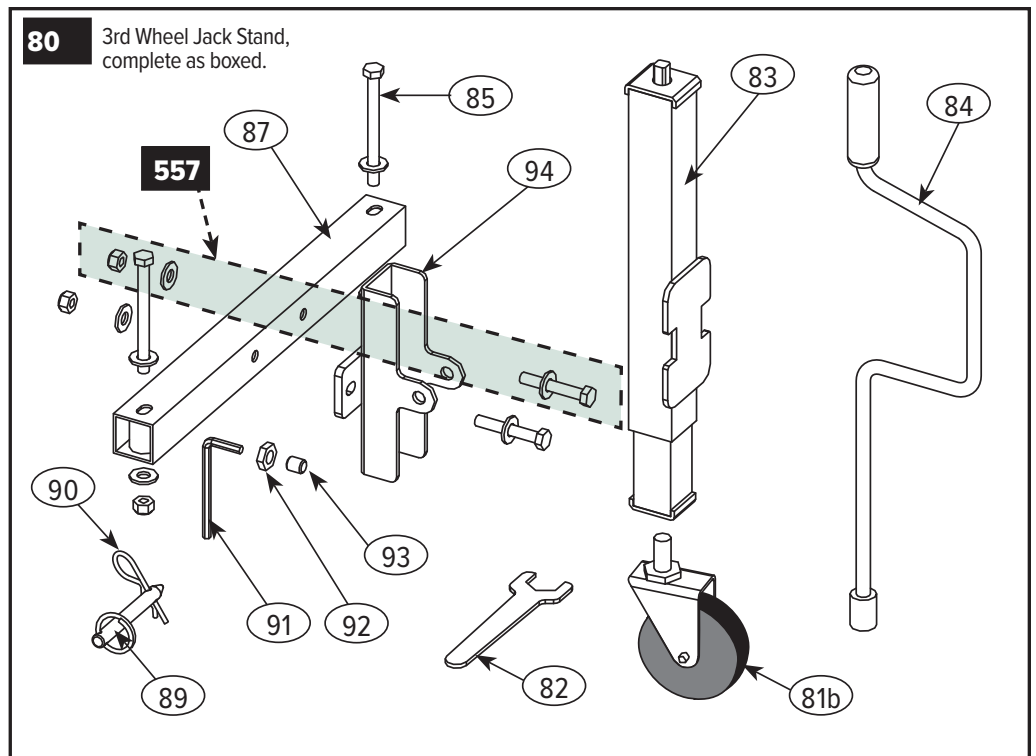
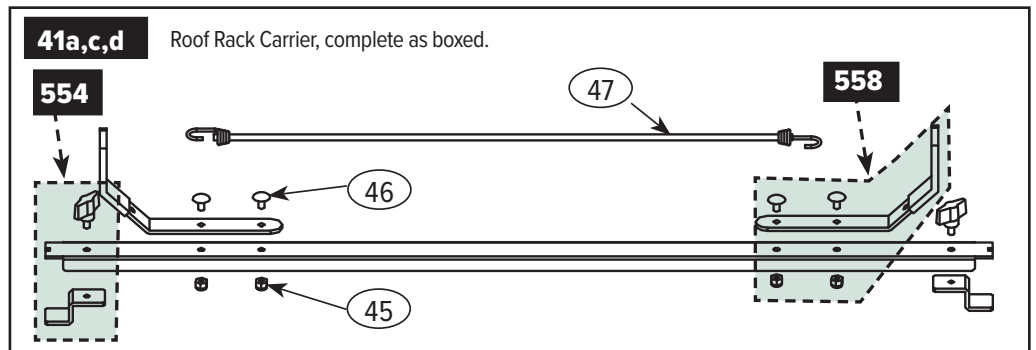
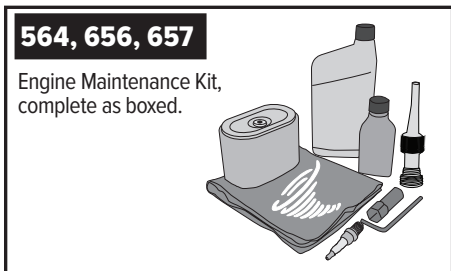
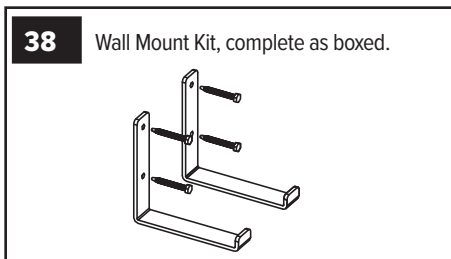
Ref. #	Part Name	Part #
27	6" Band clamp, bridge type	01-02-024
28a	15 ft. - PVC (green), 6" dia	RPVC-06-15
28b	15 ft. - Urethane (yellow), 6" dia	RPUR-06-15
30	6" x 7" Power Vacuum collar, complete w/latches	01-01-721
36a	15 ft. - PVC (green), 7" dia	RPVC-07-15
36b	15 ft. - Urethane (yellow), 7" dia	RPUR-07-15
37	10-24 x 1/2" Round head screw	01-01-173
54	7" Band clamp, bridge type	01-02-023
56	Estate Vacuum Sleeve	01-01-2190
101	Extension collar, complete w/strikes	01-02-047
109	5/16-18 x 1.75" Carriage bolt	01-01-1034
110a	15 ft. Estate Vacuum extension hose complete as boxed - PVC (green), 6" dia	01-02-464
110b	15 ft. Estate Vacuum extension hose complete as boxed - Urethane (yellow), 6" dia	01-02-465
112	Spring clip	01-01-1109
114	Strap w/ spring clip	01-04-055
472e	Estate Vacuum, complete as boxed - PVC (green)	254
472f	Estate Vacuum, complete as boxed - Urethane (yellow)	256

Ref. #	Part Name	Part #
473e	Power Vacuum Pickup, complete as boxed - PVC (green)	253
473f	Power Vacuum Pickup, complete as boxed - Urethane (yellow)	255
474b	Wand, complete w/handles & shoulder strap	01-04-2120
477c	Power Unloader, complete as boxed - PVC (green)	236
477d	Power Unloader, complete as boxed - Urethane (yellow)	237
478b	Power Unloader chute, complete w/latches	05-02-078
489	Latch w/hardware (set of 2)	01-03-045
523	Standard strike w/hardware (set of 4)	01-02-564
524	10" x 7" Power Vacuum coupling, complete w/latches - Z-10	06-02-003
555	Inner & outer hose clamp w/screw	01-02-122
650	1/4"-20 Eye bolt	01-01-2129
651	1/4"-20 Acorn nut	01-01-2130
652	5/15"-18 Nylon flange nut	07-01-151
653	Side handle tube w/grip	01-02-2124
654	Handle tube w/grip	01-02-2122
655	Molded wand inlet w/bracket	01-02-2120



ACCESSORIES - ALL CYCLONE RAKE MODELS

Ref. #	Part Name	Part #	Ref. #	Part Name	Part #
38	Wall Mount Kit, complete as boxed	205	92	M10 Lock nut, for Jack Stand	01-01-546
41a	Roof Rack Carrier, complete as boxed - Classic	204	93	M10 x 16 mm Set screw, for Jack Stand	01-01-545
41c	Roof Rack Carrier, complete as boxed - Commander	220	94	Tab bracket, for Jack Stand	01-02-029
41d	Roof Rack Carrier, complete as boxed - Commercial PRO, XL & Z-10	221	554	Clamp bracket & knob for Roof Rack Carrier	01-02-121
45	1/4-20 Nylon lock nut	01-01-157	557	5/16-18 x 2" Bolt, nut & washer	01-02-124
46	1/4-20 x 1/2" Truss head screw	01-01-310	558	Hose hanger bracket assembly for Roof Rack Carrier	01-02-160
47	5/16" x 30" Bungee cord for Roof Rack Carrier	01-01-396	564	Engine Maintenance Kit - 8 HP & 10 HP B&S Vanguard engines	231
80	3rd Wheel Jack Stand, complete as boxed	218	656	Engine Maintenance Kit - B&S XR950-PRO engines	213XR
81b	5" Caster wheel, for Jack Stand w/wrench	01-01-1718	657	Engine Maintenance Kit - B&S 6.5 HP Vanguard Cyclonic engine	213VG
82	Caster wrench, for Jack Stand 5" wheel	01-01-2077			
83	Jack assembly, for Jack Stand	01-02-036			
84	Jack handle, for Jack Stand	01-01-554			
85	5/16-18 x 3.75" Bolt	01-01-2125			
87	Mount tube, for Jack Stand	01-02-028			
89	Clevis pin & ring, for Jack Stand	01-02-032			
90	Bridge pin, large (0.118 dia. x 2.4")	01-01-203			
91	5 mm Hex wrench, for Jack Stand	01-01-556			



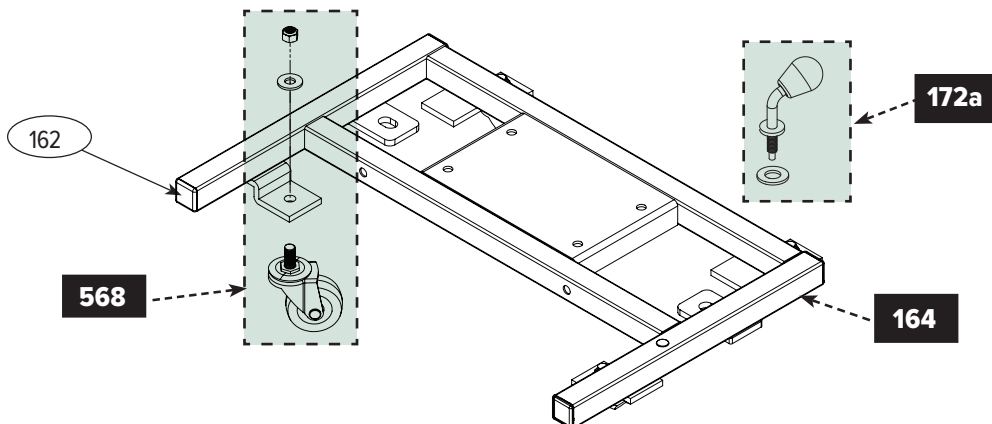
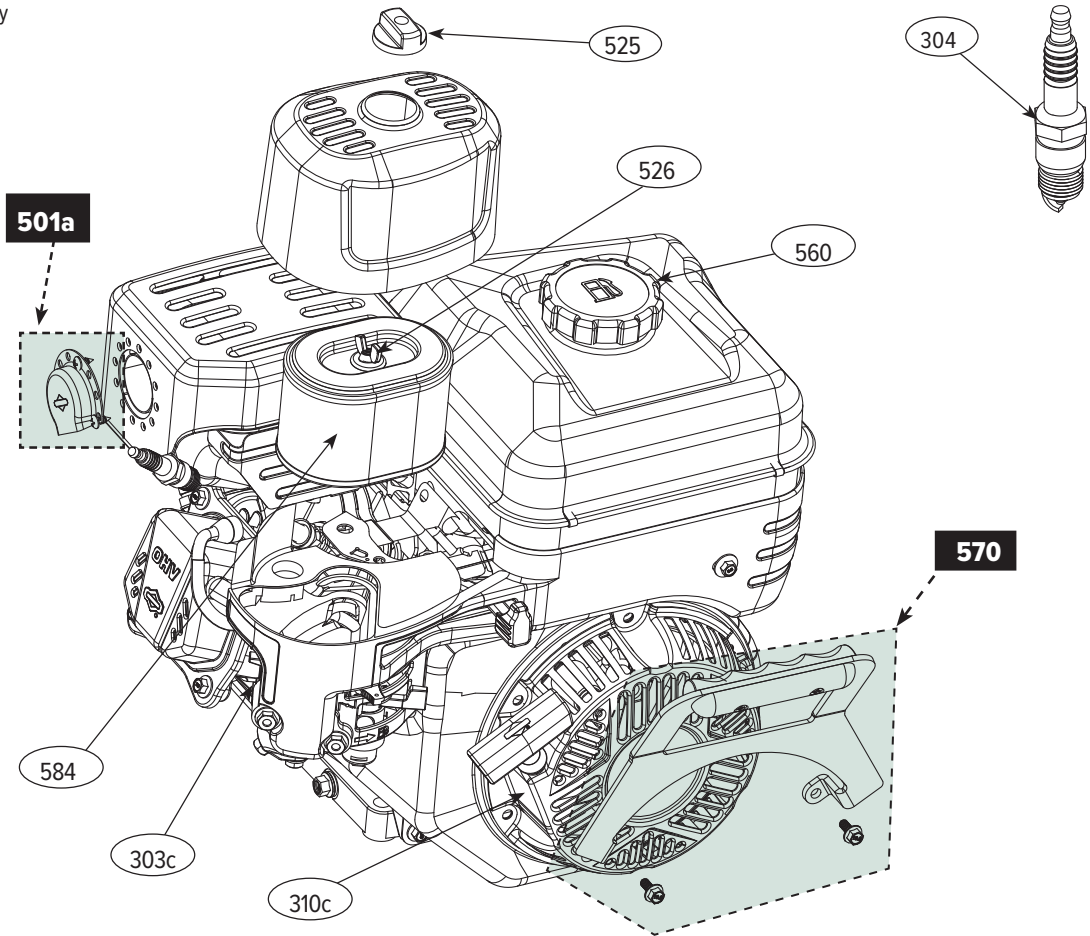
ACCESSORIES - POWER-LIFT UNLOADER

Ref. #	Part Name	Part #
37	10-24 x 1/2" Screw	01-01-173
45	1/4-20 Nylon lock nut	01-01-157
74	Clamp knob	01-01-291
146	Bridge pin, 42 mm	01-01-473
225	3/8" Nylon lock nut	01-01-240
273	10-24 Low profile nylon lock nut	01-01-199
312	M5 Nylon lock nut, 0.8 mm pitch	01-01-1122
520	Cyclone Power Lift Unloader, complete as boxed	244
572	Charger - Power-Lift	01-01-1504
600	Battery cover - Power-Lift	01-01-1538
601	Battery strap - Power-Lift	01-01-1552
602	Battery - Power Lifter	01-01-1539
603	Return spring - Power-Lift	01-01-1545
604	U-bolt w/nuts	01-02-554
605	Battery tray - Power-Lift	01-01-1537
606	1/4-20 x 4" Full thread bolt, grade 5	01-01-1536
607	1/4-20 Hex nut	01-01-1551
608	Spacer, battery bolt	01-01-1632
609	M5 x 20 mm Screw	01-01-1489
610	Caster bracket - Power-Lift	01-01-1540
611	Caster wrench - Power-Lift	01-01-1996
612	Pivot shaft - Power-Lift	01-01-1535
613	Base plate w/stud - Power-Lift	01-02-536
614	Collector bracket - Power-Lift	01-03-404
615	Lifter cable assembly - Power-Lift	01-02-543
616	Control panel assembly & Hand control - Power-Lift	01-03-540
617	Linear actuator - Power-Lift	01-01-1612
618	Pulley assembly complete - Power-Lift	01-03-395
619	3/8-16 x 1.75" Full thread bolt, grade 5	01-01-1668
620	Hand control holder - Power-Lift	01-02-555
621	Holding pin - Power-Lift	01-01-1592
622	Actuator pivot assembly - Power-Lift	01-02-542
623	Wear plate - Power-Lift	01-01-1627
624	Actuator brace - Power-Lift	01-01-1622
625	Lifter cable guide - Power-Lift	01-01-2167
626	M6 x 16 mm Pan head screw, 1.0 mm pitch	01-01-1642
627	Base plate foot - Power-Lift	01-01-1548
628	Pivot bracket - Power-Lift	01-01-1510
629	M5 x 16 mm Screw, 0.8 mm pitch	01-01-1641
645	Spare parts kit - Power-Lift (not shown)	01-02-557

ENGINE - B&S XR950-PRO ENGINE

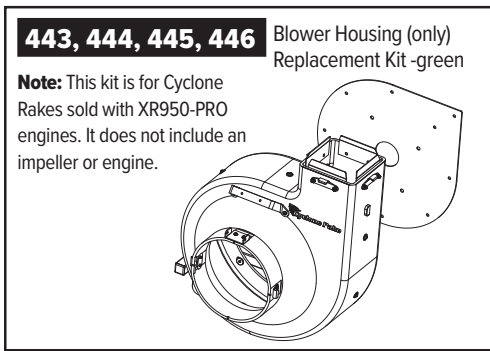
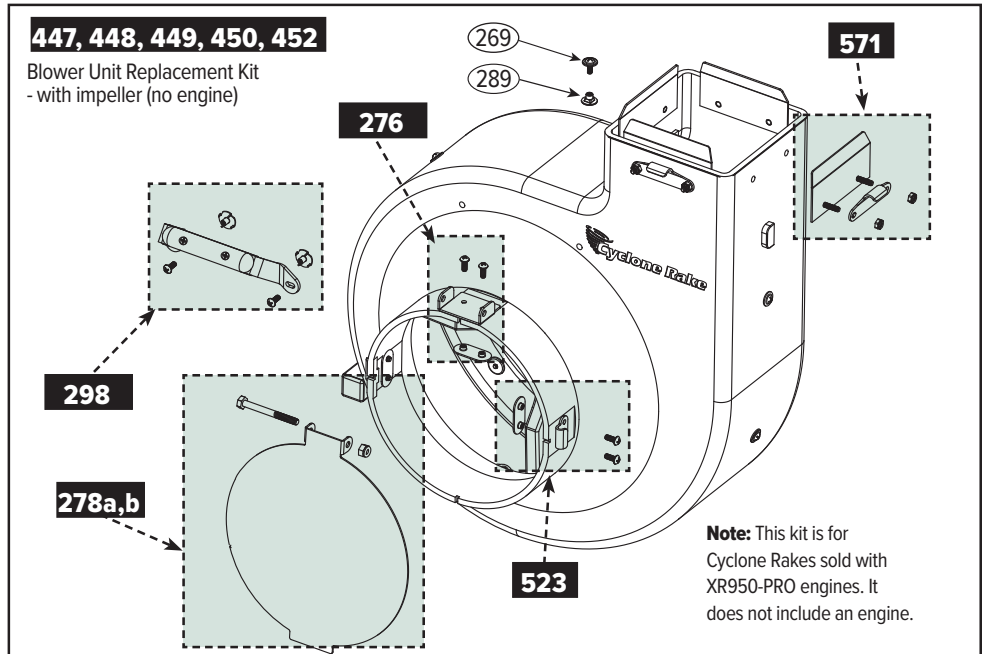
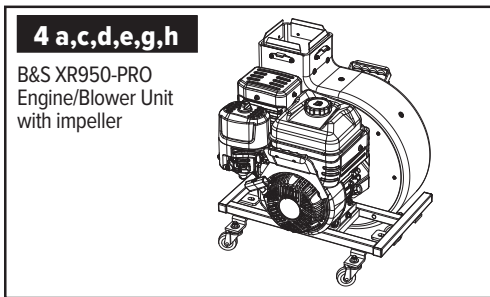
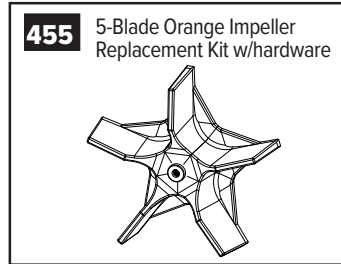
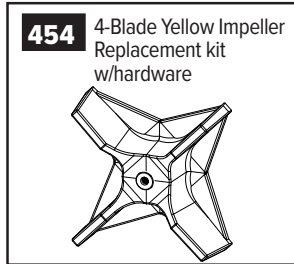
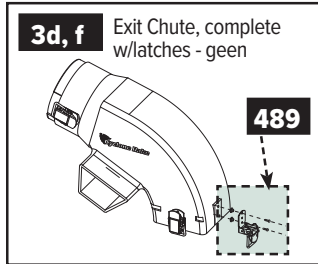
Ref. #	Part Name	Part #	Ref. #	Part Name	Part #
1621" Cap plug - black (set of 4)	09-02-055	525Air filter cover knob - plastic.....	01-01-1744
164Engine frame w/cap plugs.....	05-02-003	526Wing nut - air filter	01-01-1745
172aEngine clamp handle w/rubber washers (set of 2).....	01-02-681	560Carbon canister gas cap	01-01-782
302tEngine - B&S - XR950-PRO	04-02-302	568Caster wheel w/nut & washer for engine frame (set of 4).....	01-02-126
303cButterfly dipstick - XR950-PRO & Cyclonic engine	01-01-2151	570Engine handle w/hardware, B&S XR950-PRO.....	01-03-2109
304Spark plug, Bosch FR8DCX or equiv.....	01-01-758	584Air & foam filters, B&S XR950-PRO.....	01-01-2116
310cRecoil starter, B&S XR950-PRO	01-01-2113			
501aExhaust deflector w/hardware.....	01-01-1331			

302t XR950-PRO Engine only



BLOWER UNIT - B&S XR950-PRO

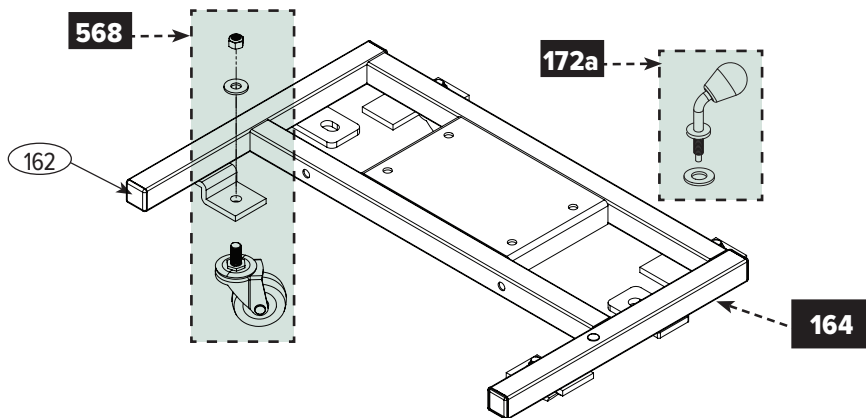
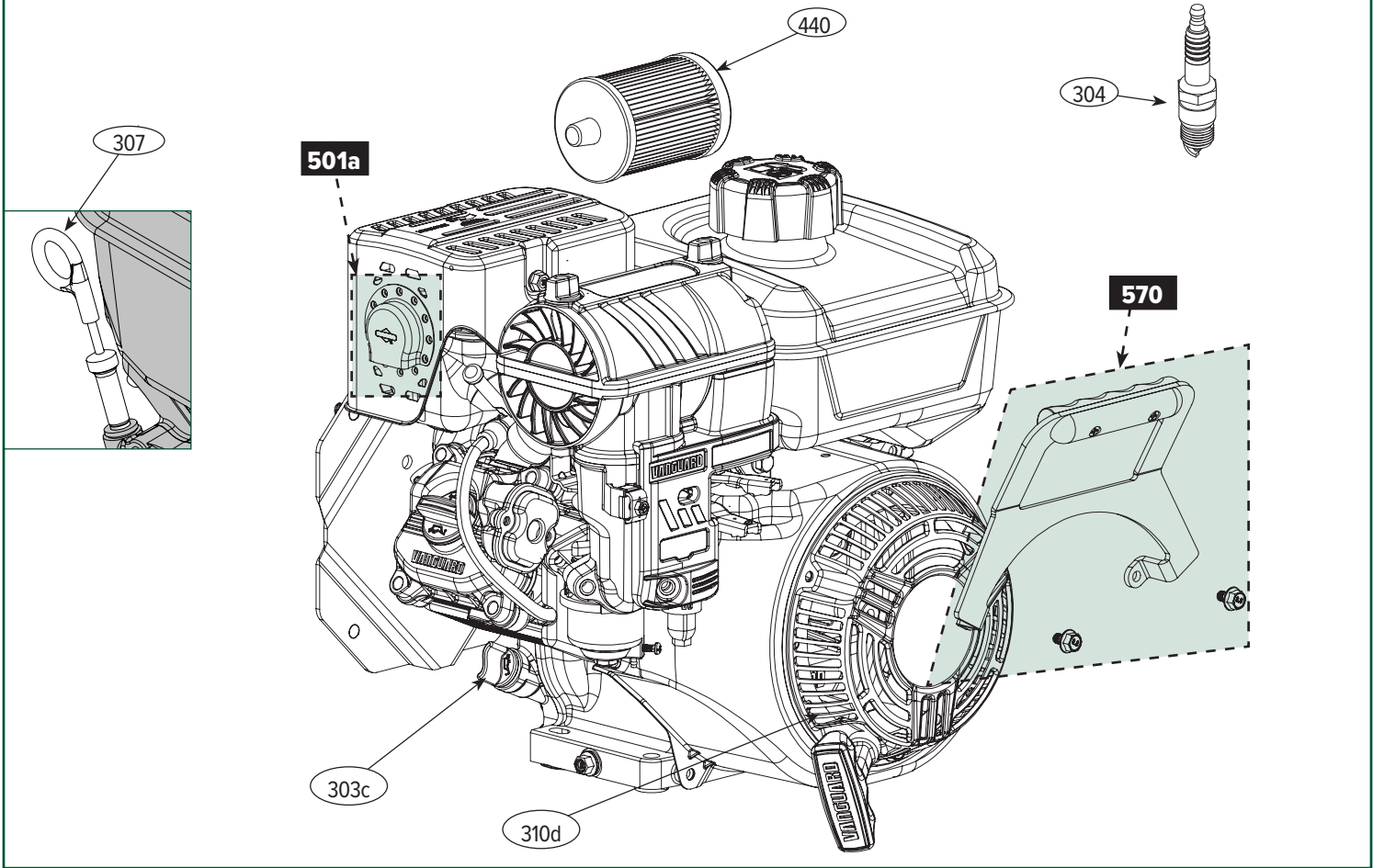
Ref. #	Part Name	Part #	Ref. #	Part Name	Part #
3d	Exit chute, w/latches - Commercial PRO	02-02-077	444	7" Blower housing replacement kit - blue liner (no impeller) - Classic	01-03-1066
3f	Exit chute, w/latches - Classic & Commander	01-02-077	446	8" Blower housing replacement kit - blue liner (no impeller) - Commander & Commercial PRO	01-03-1069
4a	7" Blower Unit - XR950-PRO engine, 4-blade impeller & std liner - Classic	01-04-200	447	7" Blower Unit replacement kit, - std liner & 4-blade impeller - Classic	01-04-1036
4c	8" Blower Unit - XR950-PRO engine, 4-blade impeller & std liner - Commander	01-04-510	448	7" Blower Unit replacement kit, - blue liner & 4-blade impeller - Classic	01-04-1066
4d	8" Blower Unit - XR950-PRO engine, 5-blade orange impeller & std liner - Commercial PRO	02-04-400	449	8" Blower Unit replacement kit, - std liner & 4-blade impeller - Commander	01-04-1039
4e	7" Blower Unit - XR950-PRO engine, 4-blade impeller & blue liner - Classic	01-04-250	450	8" Blower Unit replacement kit, - blue liner & 4-blade impeller - Commander	01-04-1069
4g	8" Blower Unit - XR950-PRO engine, 4-blade impeller & blue liner - Commander	01-04-560	452	8" Blower Unit replacement kit, - blue liner & 5-blade impeller - Commercial PRO	01-04-1070
4h	8" Blower Unit - XR950-PRO engine, 5-blade orange impeller & blue liner - Commercial PRO	02-04-450	453	8" Blower Unit replacement kit, - std liner & 5-blade impeller - Commercial PRO	01-04-1040
269	10-24 x 1/2" Truss head screw	01-01-563	454	Yellow 4-blade impeller replacement kit for Commander w/XR950-PRO engine	02-03-017
276	Safety cover hinge bracket w/t-nut & screw	01-02-261	455	Orange 5-blade impeller replacement kit for Commercial PRO w/XR950-PRO engine	02-03-020
278a	7" Safety cover w/bolt & nut - Classic	01-02-260	489	Latch w/hardware (set of 2)	01-03-045
278b	8" Safety cover w/bolt & nut - Commander & Commercial PRO	01-02-1160	523	Standard strike, w/hardware (set of 4)	01-02-564
289	Blower liner nut (special part - 8 req'd)	01-01-145	571	Exit plate w/studs, wide strike & nuts	01-02-128
298	Blower front handle w/hardware	01-03-1866			
443	7" Blower housing replacement kit - std liner (no impeller) - Classic	01-03-1036			
445	8" Blower housing replacement kit - std liner (no impeller) - Commander & Commercial PRO	01-03-1039			



ENGINE - B&S 6.5 HP VANGUARD CYCLONIC

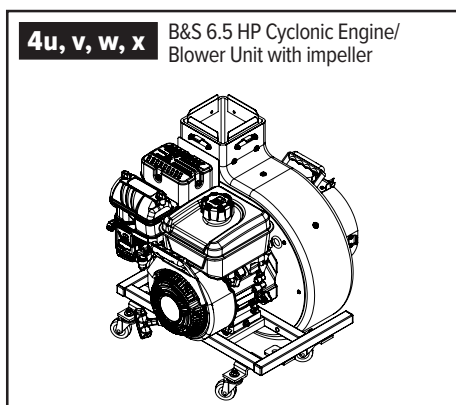
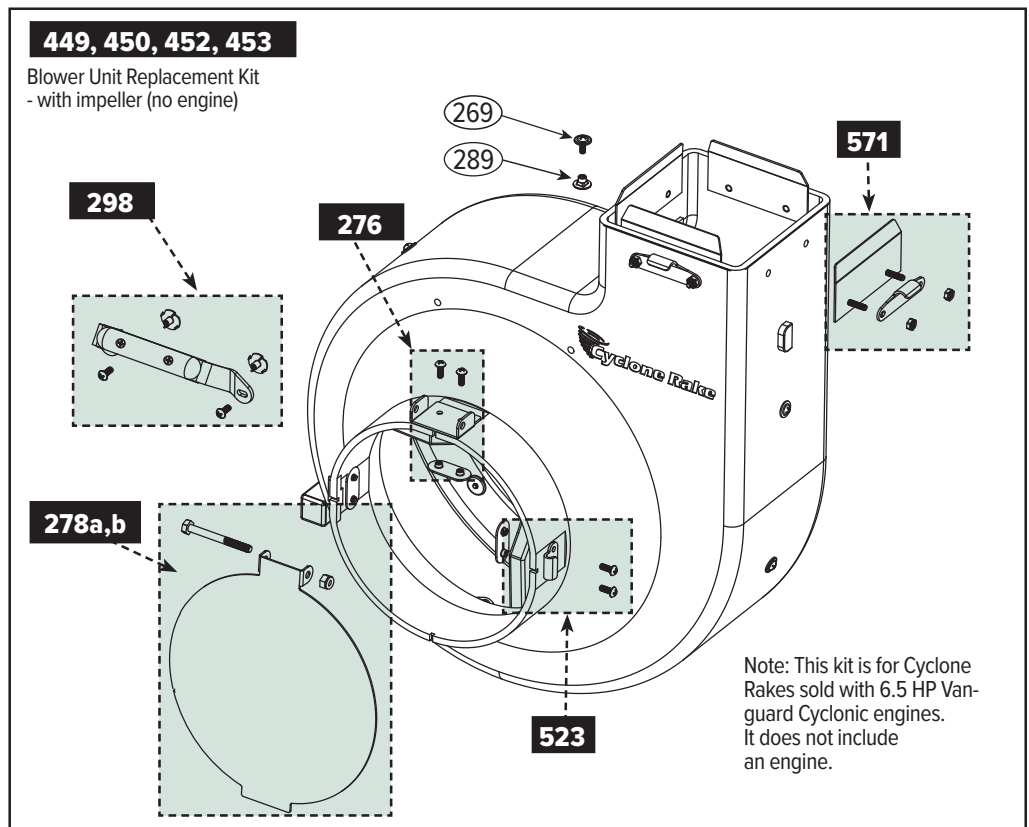
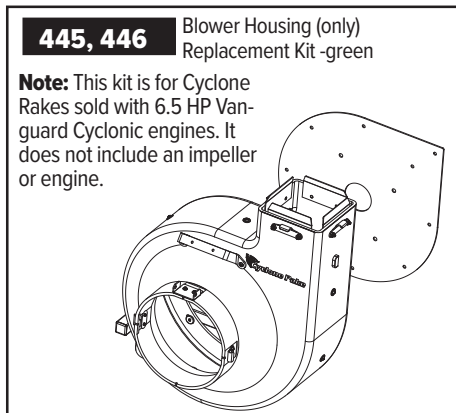
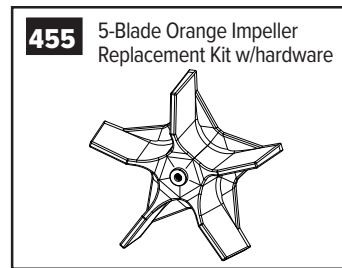
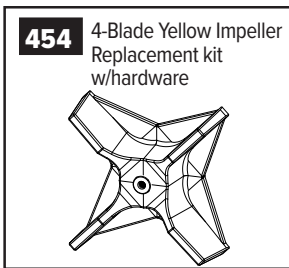
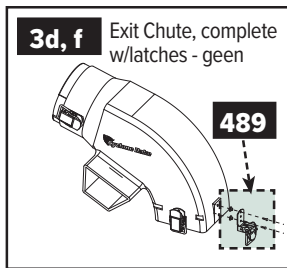
Ref. #	Part Name	Part #	Ref. #	Part Name	Part #
162	1" Cap plug - black (set of 4)	09-02-055	310d	Recoil starter, - B&S 6.5HP Cyclonic	01-01-2153
164	Engine frame w/cap plugs	05-02-003	440	Air filter, B&S 6.5HP Cyclonic	01-01-2116
172a	Engine clamp handle w/rubber washers (set of 2)	01-02-681	441	Exhaust deflector, B&S 6.5HP Cyclonic	01-01-2114
294	#8-3/8" Sheet metal screw	01-01-298	501a	Exhaust deflector w/hardware	01-01-1331
302s	Engine - B&S 6.5HP Vanguard Cyclonic	01-04-307	568	Caster wheel w/nut & washer for engine frame (set of 4)	01-02-126
303c	Butterfly dipstick - XR950-PRO & Cyclonic engines	01-01-2151	570	Engine handle, B&S XR950-PRO	01-03-2109
304	Spark plug, Bosch FR8DCX or equiv	01-01-758			
307	Long dipstick - B&S 6.5HP Cyclonic	01-01-2150			

302s 6.5 HP Vanguard Cyclonic Engine Only



BLOWER UNIT - B&S 6.5 HP VANGUARD CYCLONIC

Ref. #	Part Name	Part #	Ref. #	Part Name	Part #
3d	Exit chute, complete w/latches - Commercial PRO	02-02-077	446	8" Blower housing replacement kit - blue liner (no impeller) - Commander & Commercial PRO	01-03-1069
3f	Exit chute, complete w/latches - Commander	01-02-077	449	8" Blower Unit replacement kit - std liner & 4-blade impeller - Commander	01-04-1039
4u	8" Blower Unit - 6.5 HP Cyclonic Engine, std liner & 4-blade impeller - Commander	01-04-610	450	8" Blower Unit replacement kit - blue liner & 4-blade impeller - Commander	01-04-1069
4v	8" Blower Unit - 6.5 HP Cyclonic Engine, blue liner & 4-blade impeller - Commander	01-04-660	452	8" Blower Unit replacement kit - blue liner & 5-blade impeller - Commercial PRO	01-04-1070
4w	8" Blower Unit - 6.5 HP Cyclonic Engine, std liner & orange 5-blade impeller - Commercial PRO	02-04-610	453	8" Blower Unit replacement kit - std liner & 5-blade impeller - Commercial PRO	01-04-1040
4x	8" Blower Unit - 6.5 HP Cyclonic Engine, blue liner & orange 5-blade impeller - Commercial PRO	02-04-660	454	Yellow 4-blade impeller replacement kit for Commander w/ 6.5hp cyclonic engine	02-03-017
269	10-24 x 1/2" Truss head screw	01-01-563	455	Orange 5-blade impeller replacement kit for Commercial PRO w/6.5hp cyclonic engine	02-03-020
276	Safety cover hinge bracket w/t-nut & screw	01-02-261	489	Latch w/hardware (set of 2)	01-03-045
278b	8" Safety cover w/bolt & nut - Commander & Commercial PRO	01-02-1160	523	Standard strike, w/hardware (set of 4)	01-02-564
289	Blower liner nut (special part - 8 req'd)	01-01-145	531	Collar shoe for latch	01-01-1276
298	Blower front handle w/hardware	01-03-1866	571	Exit plate w/studs, wide strike & nuts	01-02-128
445	8" Blower housing replacement kit - std liner (no impeller) - Commander & Commercial PRO	01-03-1039			

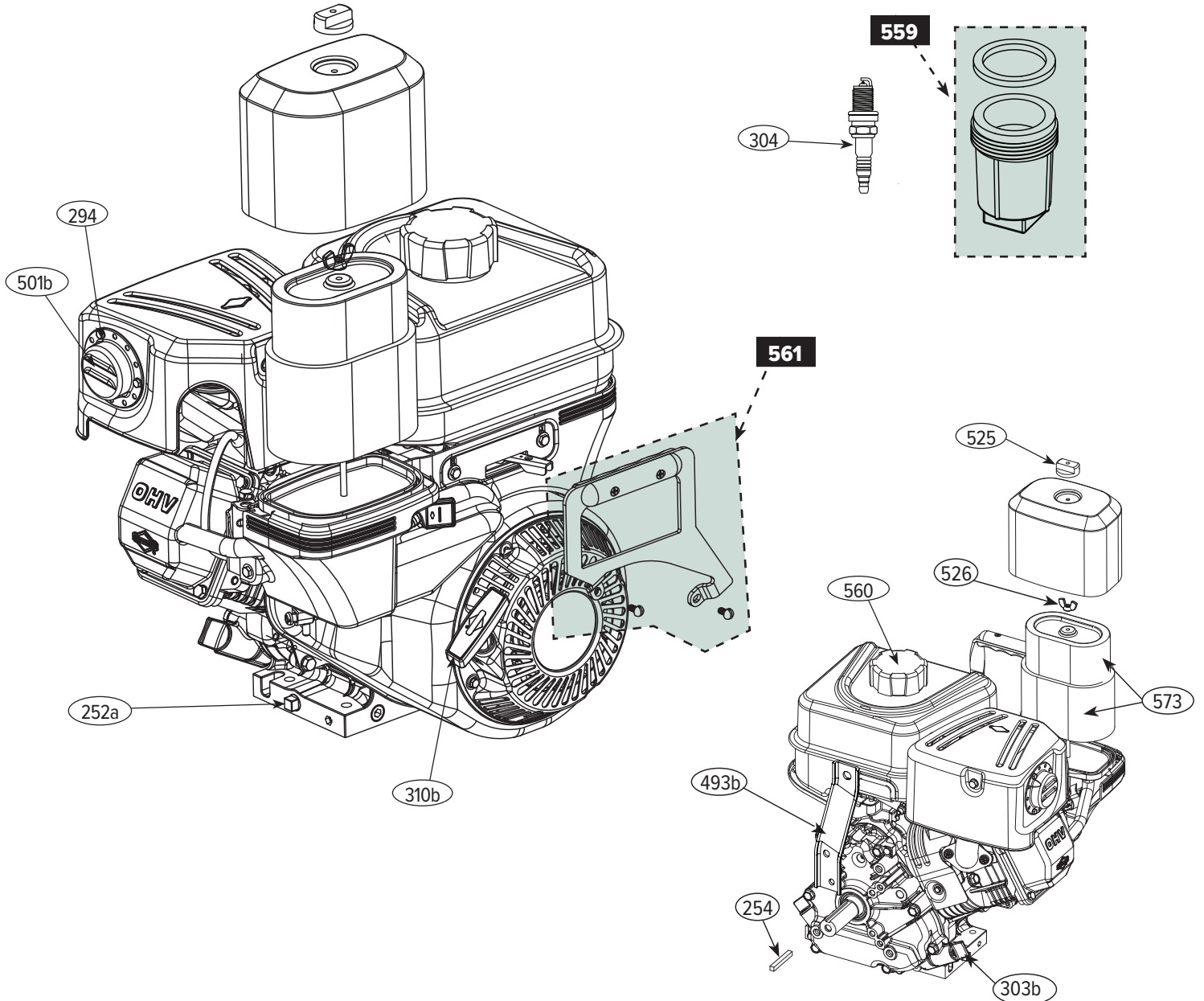


ENGINE - B&S 8 HP & 10 HP - PULL-START

Ref. #	Part Name	Part #
252a	Oil drain plug	01-01-812
254	Shaft key	01-01-301
294	8-3/8" Sheet metal screw	01-01-298
302h	10 HP Briggs & Stratton Vanguard - Z-10 (engine only)	06-02-301
302i	8 HP Briggs & Stratton Vanguard - XL (engine only)	05-02-302
303b	Oil fill butterfly plug	01-01-1356
304	Spark plug, Bosch FR8DCX or equiv.	01-01-758
310b	Recoil starter, Briggs & Stratton Vanguard	01-01-1353
311b	Engine handle bolt, Briggs & Stratton Vanguard	01-01-1800

Ref. #	Part Name	Part #
493b	Briggs front bracket 8 HP & 10 HP	06-01-014
501b	Exhaust deflector - Briggs & Stratton Vanguard 8HP & 10HP	05-01-1331
525	Air filter cover knob - plastic	01-01-1744
526	Wing nut - air filter	01-01-1745
559	Fuel bowl & gasket - aluminum	01-02-609
560	Carbon canister gas cap	01-01-782
561	Engine handle - Briggs & Stratton Vanguard - 8HP & 10HP	06-02-017
573	Air & foam filters - Briggs & Stratton Vanguard - 8 HP & 10 HP	01-01-1908

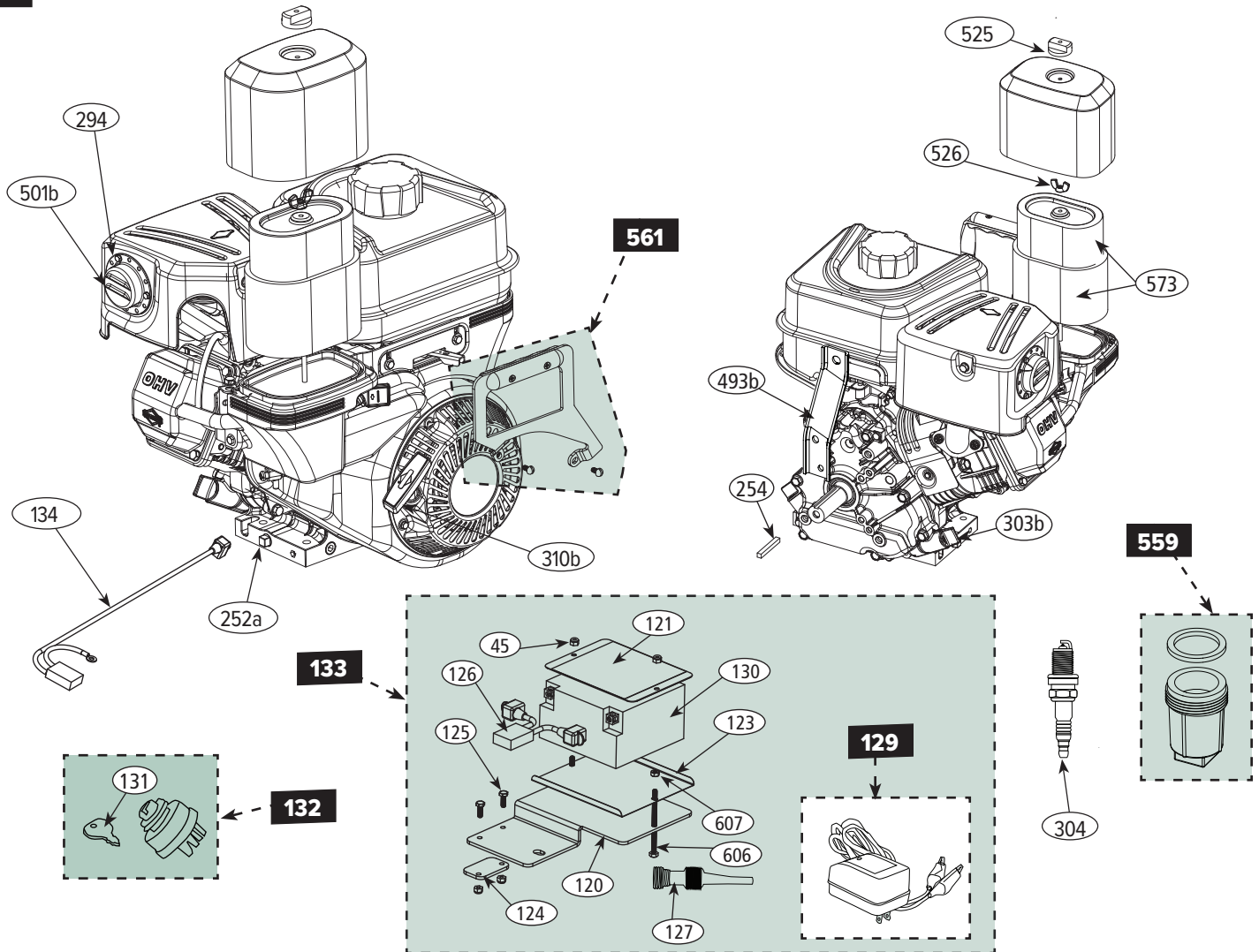
302h,i 8HP & 10HP B&S Vanguard Pull Start Engine Only



ENGINE - B&S 8 HP & 10 HP - ELECTRIC START

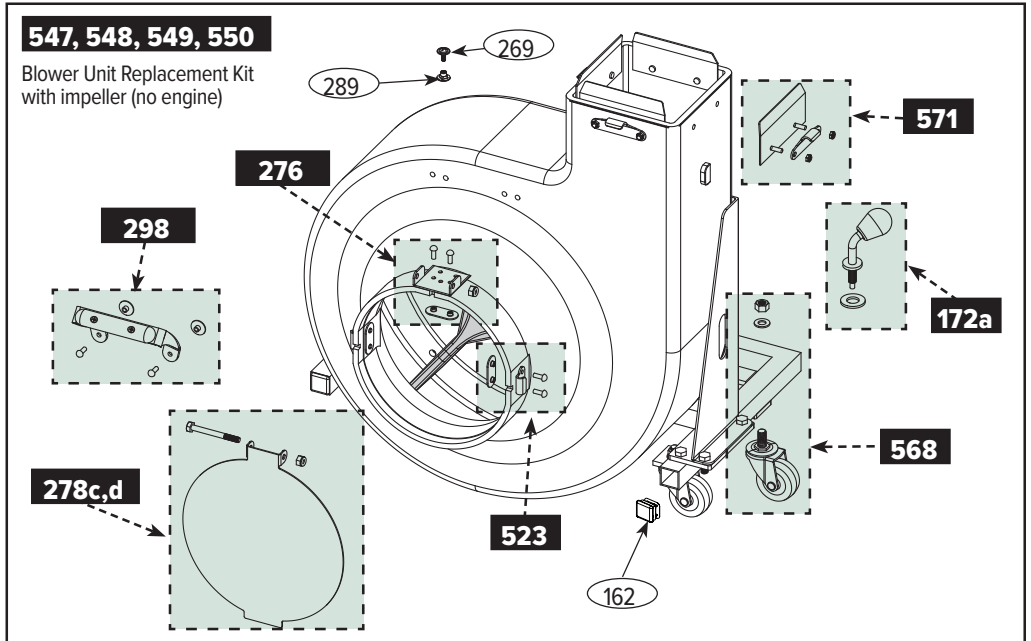
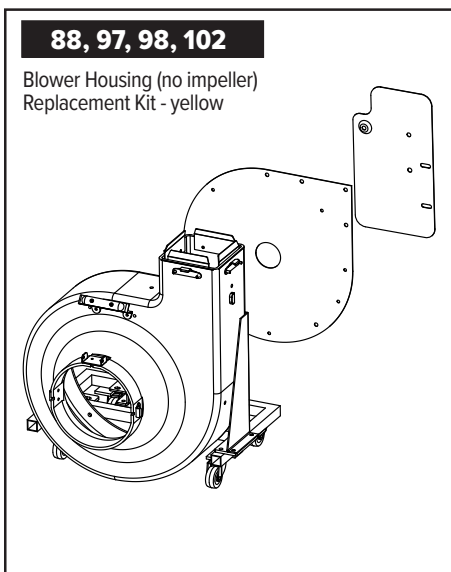
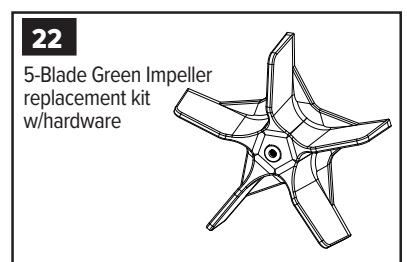
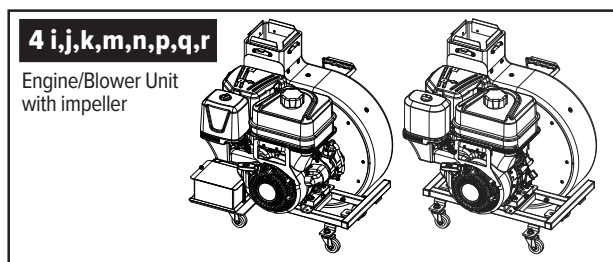
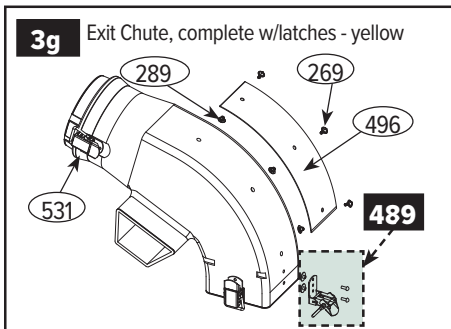
Ref. #	Part Name	Part #	Ref. #	Part Name	Part #
45	1/4-20 Nylon lock nut	01-01-157	302n	10 HP Briggs & Stratton Vanguard w/electric start - Z-10 (engine only)	06-02-301E
120	Battery platform	01-01-1939	303b	Oil fill butterfly plug	01-01-1356
121	Battery hold down	01-01-1937	304	Spark plug, Bosch FR8DCX or equiv.	01-01-758
123	Battery tray	01-01-1938	310b	Recoil starter, Briggs & Stratton Vanguard	01-01-1353
124	Battery extension plate	01-01-1940	311b	Engine handle bolt, Briggs & Stratton Vanguard	01-01-1800
125	1/4-20 x 3/4" Hex bolt	01-01-1593	493b	Briggs Front Bracket 8 HP & 10 HP	06-01-014
126	Battery harness	01-01-1942	501b	Exhaust deflector	
127	Funnel	01-01-1905		- Briggs & Stratton Vanguard 8HP & 10HP	05-01-1331
129	Charger 800ma	01-01-1954	525	Air filter cover knob - plastic	01-01-1744
130	Battery	01-01-1924	526	Wing nut - air filter	01-01-1745
131	Key - Electric Start	01-01-1978	559	Fuel bowl & gasket - aluminum	01-02-609
132	Switch & Key Assembly - Electric Start	01-02-1978	560	Carbon canister gas cap	01-01-782
133	Battery Pack complete - Electric Start	01-03-500	561	Engine handle	
134	Engine harness	01-01-1941		- Briggs & Stratton Vanguard - 8HP & 10HP	06-02-017
252a	Oil drain plug	01-01-812	573	Air & foam filters	
254	Shaft key	01-01-301		- Briggs & Stratton Vanguard - 8 HP & 10 HP	01-01-1908
294	8-3/8" Sheet metal screw	01-01-298	606	1/4-20 x 4" Hex bolt	01-01-1536
302m	8 HP Briggs & Stratton Vanguard w/electric start - XL (engine only)	05-02-302E	607	1/4-20 Hex nut	01-01-1551

302m,n 8HP & 10HP B&S Vanguard Electric Start Engine Only



BLOWER UNIT - BRIGGS & STRATTON 8 HP & 10 HP ENGINES

Ref. #	Part Name	Part #	Ref. #	Part Name	Part #
3g	Exit chute, complete w/latches - XL & Z-10	05-02-077	102	10" Blower housing replacement kit - blue liner & frame (no impeller) - Z-10	06-03-1068
4i	8" Blower Unit - 8HP pull-start engine, std liner - XL	05-04-500	162	1" Cap plug - black (set of 4)	09-02-055
4j	10" Blower Unit - 10HP pull start engine, std liner - Z-10	06-04-500	172a	Engine clamp handle w/rubber washers (set of 2)	01-02-681
4k	8" Blower Unit - 8HP pull-start engine, blue liner - XL	05-04-550	269	10-24 x 1/2" Truss head screw	01-01-563
4m	10" Blower Unit - 10HP pull start engine, blue liner - Z-10	06-04-550	276	Safety cover hinge bracket w/t-nut & screw	01-02-261
4n	8" Blower Unit - 8HP electric start engine, std liner - XL	05-04-500E	278c	8" Safety cover, yellow w/bolt & nut - XL	05-02-1160
4p	10" Blower Unit - 10HP electric start engine, std liner - Z-10	06-04-500E	278d	10" Safety cover, yellow w/bolt & nut - Z-10	06-02-009
4q	8" Blower Unit - 8HP electric start engine, blue liner - XL	05-04-550E	289	Blower liner nut (special part - 8 req'd)	01-01-145
4r	10" Blower Unit - 10HP electric start engine, blue liner - Z-10	06-04-550E	298	Blower front handle w/hardware	01-03-1866
22	Green 5-blade impeller replacement kit w/hardware - XL & Z-10	02-03-023	289	Blower liner nut (special part - 8 req'd)	01-01-145
88	8" Blower housing replacement kit - std liner & frame (no impeller) - XL	05-03-1038	489	Latch w/hardware (set of 2)	01-03-045
97	8" Blower housing replacement kit - blue liner & frame (no impeller) - XL	05-03-1068	496	Exit chute liner	05-01-005
98	10" Blower housing replacement kit -std liner & frame (no impeller) - Z-10	06-03-1038	523	Standard strike, w/hardware (set of 4)	01-02-564
			531	Collar shoe for latch	01-01-1276
			547	8" Blower Unit replacement kit - std liner & impeller - XL	05-04-038
			548	8" Blower Unit replacement kit - blue liner & impeller - XL	05-04-068
			549	10" Blower Unit replacement kit - std liner & impeller - Z-10	06-04-038
			550	10" Blower Unit replacement kit - blue liner & impeller - Z-10	06-04-068
			568	Caster wheel w/nut & washer for engine frame	01-02-126
			571	Exit plate w/studs, wide strike & nuts	01-02-128





WOODLAND POWER PRODUCTS, INC.
72 Acton Street, West Haven, Connecticut 06516
TOLL-FREE 888-531-7253
www.CycloneRake.com