

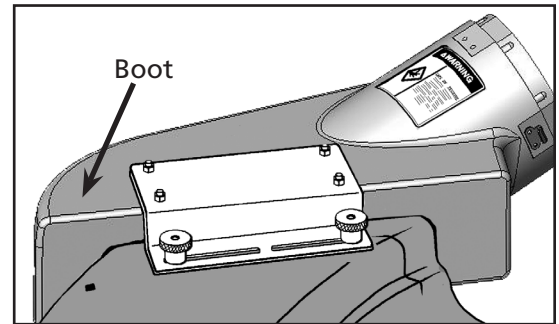
Assembly and Installation

The Standard Mower Deck Adapter does not have to be closely fitted to your deck, or airtight to function properly. It simply needs to be installed in front of the deck opening where the grass exits.

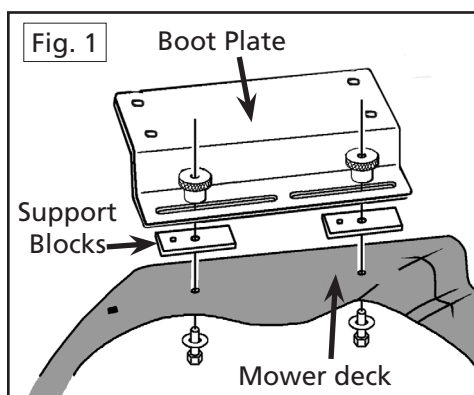
Mounting the Boot Plate to Your Mower Deck

1. Remove the hinged grass deflector from your mower deck to expose the deck opening. On most machines this is just a matter of removing two bolts.

Safety Note: If you remove the Mower Deck Adapter later, you **MUST** re-install the grass deflector.

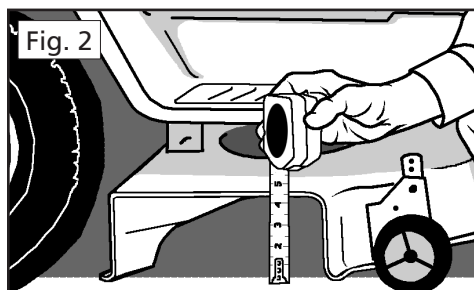


Finished assembly of the Standard Mower Deck Adapter™ with quick release deck connection.



2. Position the Boot Plate over the deck opening so that the large flat area of the plate overhangs your mower deck. In many cases, the slots in the plate can be positioned over the existing holes. If not, trace the outline of the slots onto your mower deck with a marker pen, then drill two 5/16" holes for the mounting bolts. Push the two 5/16 x 1.5-inch full-thread bolts up through the bottom of the mower deck and screw them into the threaded holes in the small rectangular Support Blocks (Fig. 1). Line the two blocks up parallel with each other and tighten firmly with a wrench. You will now have two threaded studs protruding up from your mower deck. Drop the Boot Plate over the threaded studs and spin on the Boot Plate Clamp Knobs.

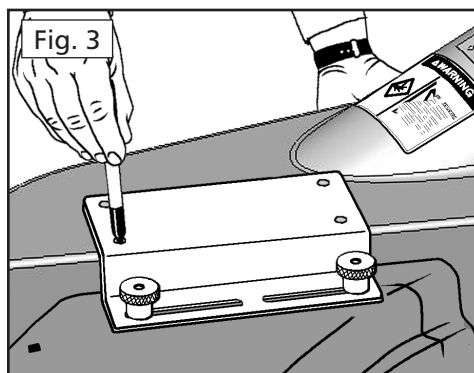
Mounting the Boot



Measure the height of the deck opening.

1. First, using a tape measure or ruler, measure the height of your deck opening (Fig. 2). If it is up to 4 1/2-inches, mount the boot plate directly to the boot. If it is over 4 1/2-inches in height, use the "U" shaped Boot Plate Spacers (see Fig. 5 on reverse).

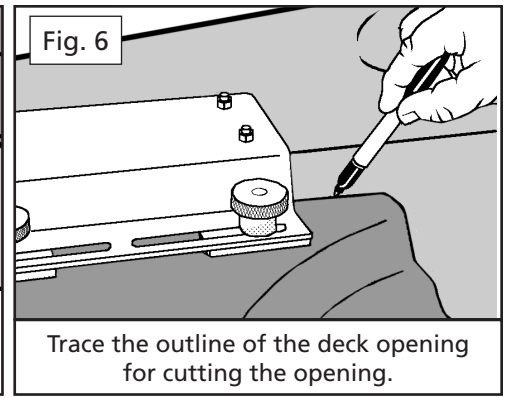
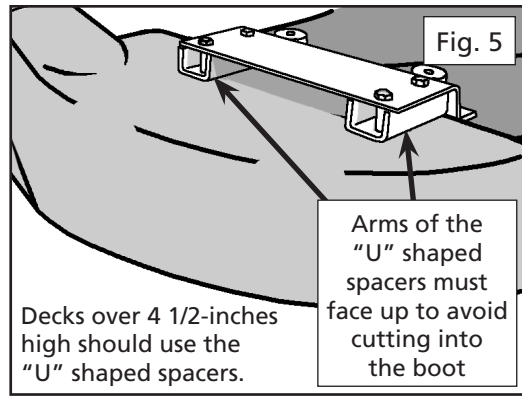
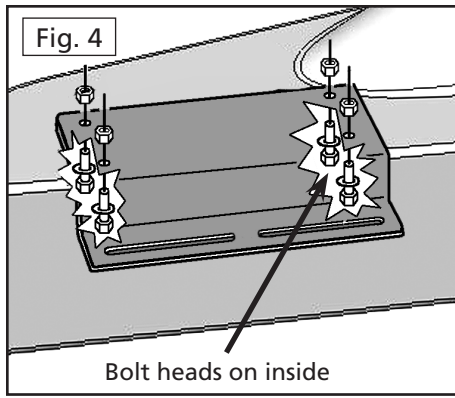
IMPORTANT: The arms of the spacers must face up, against the Boot Plate, to avoid cutting into the boot.



Mark drilling locations.

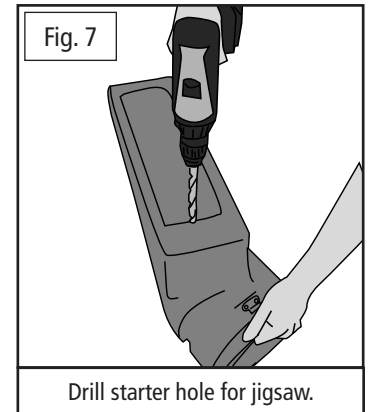
2. Hold the boot snugly against the lower surface of the plate directly in front of the deck opening (the boot may be moved forward or backward as necessary for installation). Mark the four bolt hole positions with the marker pen (Fig. 3). Loosen the clamp knobs and remove the boot plate from your mower deck.
3. Place the boot on a stable surface. Using the Boot Plate as a template, drill four 5/16" holes through the boot in the four bolt positions. The best way is to first drill one hole, then drop a bolt through the hole temporarily to keep the plate lined up. Repeat the process until all four holes have been drilled. Remove the bolts.
4. Install the mounting bolts and tighten. The bolt heads should be on the inside, to avoid blocking the boot opening (see Fig. 4 on reverse).

Continued on Reverse.



NOTE: For decks over 4 1/2-inches high, place the two metal Boot Plate Spacers between the boot and the Boot Plate with the "U" arms facing up (Fig. 5). Install the four 5/16 x 2-inch mounting bolts and tighten. The bolt heads should be on the inside to avoid blocking the boot opening (Fig. 4).

5. Install the MDA on the mower deck. Trace around the deck opening with the marker pen (Fig. 6). Then remove the MDA from the mower deck.
6. Drill a starter hole inside the marked area, (Fig. 7) and use an electric jigsaw or keyhole saw to cut the boot to the shape of your deck opening. Then place the MDA assembly back onto the deck studs, then place one rubber washer on each stud. Now, spin on the Clamp Knobs and tighten all the bolts.
7. Attach the hose collar onto the MDA with the latches and cut the hose to length as described in your owner's manual.

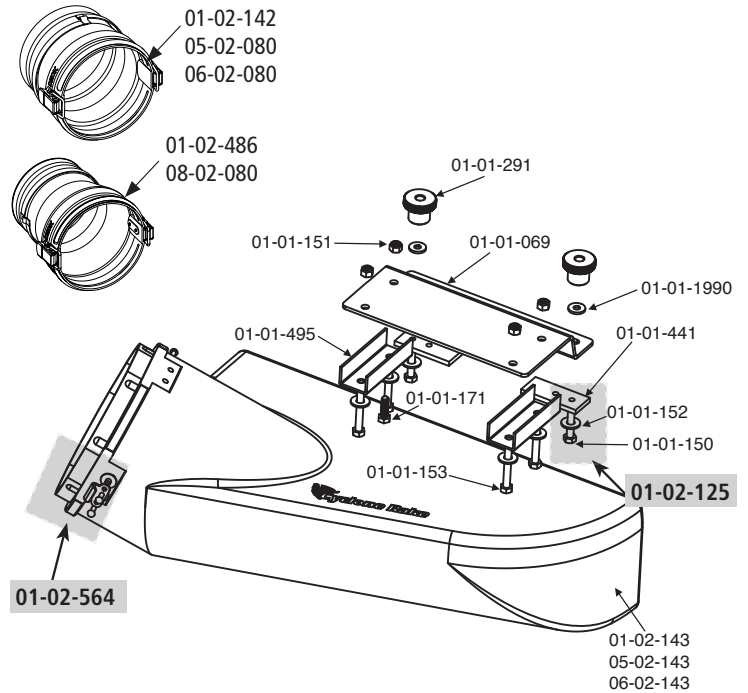


That's it you're finished!

COMPONENT LIST

Standard MDA

PART NO.	NAME	QTY
01-02-143	Standard Boot w/strikes	1
05-02-143	Standard Boot w/strikes - XL	1
06-02-143	Standard Boot w/Strikes - Z-10	1
01-01-069	Standard Boot Plate	1
01-01-150	5/16-18 x 1.5 Full thread bolt	2
01-01-151	5/16 - 18 Nylon lock nut	4
01-01-152	5/16 Washer - type A series W	6
01-01-153	5/16-18 x 2 Hex bolt	4
01-01-171	5/16-18 x 1 Hex bolt	4
01-01-291	Clamp Knob - Boot Plate	2
01-01-441	Support Block	2
01-01-495	Boot Plate Spacer	2
01-01-1990	Rubber washer	2
01-02-125	Support block, 1.5 bolt & washer	2
01-02-564	Standard strike w/hardware	3
01-02-142	8" x 8" Collar complete - green	1
01-02-486	7" x 8" Collar complete	1
05-02-080	8" x 8" Collar complete - yellow	1
06-02-080	10" x 10" Collar complete	1
08-02-080	8" x 6" Collar complete	1



COMPONENT LIST

Short MDA-G

PART NO.	NAME	QTY
01-02-145	Short Boot w/strikes	1
05-02-145	Short Boot w/strikes - XL	1
06-02-145	Short Boot w/strikes - Z-10	1
01-01-069	Standard Boot Plate	1
01-01-150	5/16-18 x 1.5 Full thread bolt	2
01-01-151	5/16 - 18 Nylon lock nut	4
01-01-152	5/16 Washer - type A series W	6
01-01-153	5/16-18 x 2 Hex bolt	4
01-01-171	5/16-18 x 1 Hex bolt	4
01-01-291	Clamp Knob - Boot Plate	2
01-01-441	Support Block	2
01-01-495	Boot Plate Spacer	2
01-02-142	8" x 8" Collar complete - green	1
01-02-486	7" x 8" Collar complete	1
01-02-125	Support block, 1.5 bolt & washer	2
01-02-564	Standard strike w/hardware	3
01-02-142	8" x 8" Collar complete - green	1
01-02-486	7" x 8" Collar complete	1
05-02-080	8" x 8" Collar complete - yellow	1
06-02-080	10" x 10" Collar complete	1
08-02-080	8" x 6" Collar complete	1

