

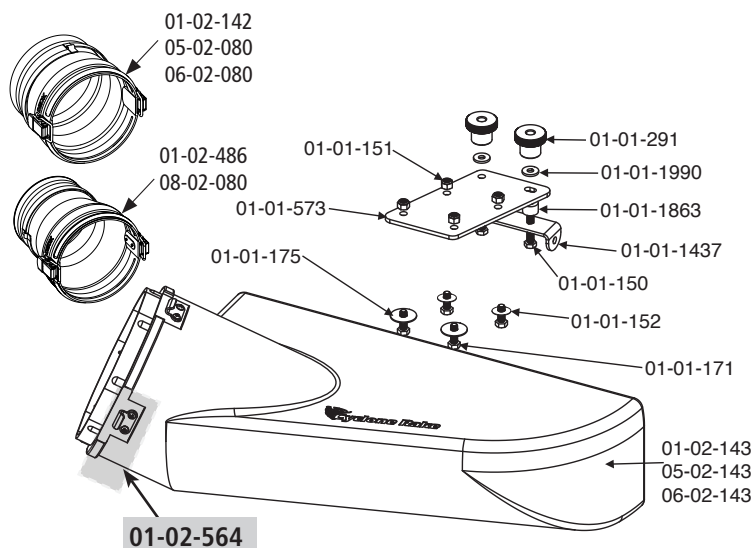
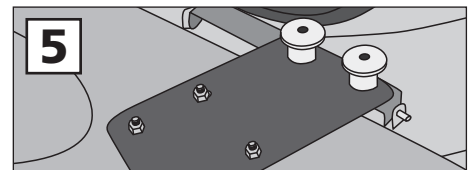
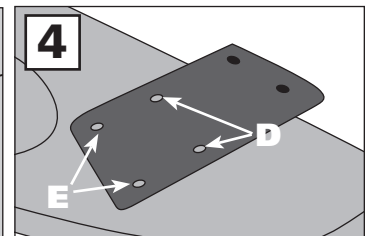
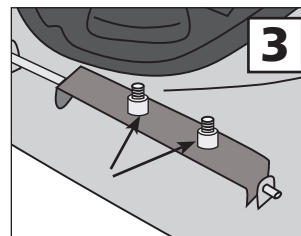
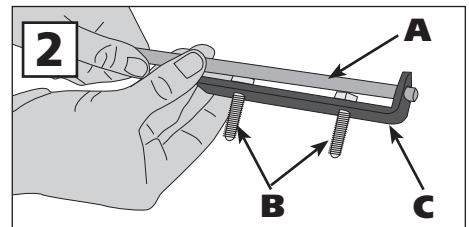
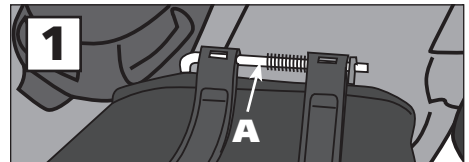
Assembly and Installation

This Mower Deck Adapter (MDA) is designed to work with several mower deck designs. The MDA does not need an airtight fit to deliver exceptional vacuum performance. It simply needs to be installed in front of the opening on the mower deck. Follow the instructions below to install.

1. Remove the grass deflector from your mower. To remove the deflector, loosen the nut located on the underside of the mower deck at the bottom of the deflector pin (A). (Fig. 1)
2. Install two 5/16-18 x 1.5 bolts (B) into the T-50 Bracket (C). Then insert the deflector pin (A) through the T50-Bracket (C). With the bolts positioned toward the front of the mower, reattach the deflector pin and bracket back onto the mower deck and tighten securely. (Fig. 2) You will now have two threaded studs protruding up from the bracket.
3. Place one spacer on each stud. (Fig. 3)
4. First, install two 5/16 x 1 inch bolts, each with a small washer, up through the inside of the boot, in the holes closest to the mower deck (D). Then install two more 5/16 x 1 inch bolts each with a 5/16 fender washer up through the remaining holes (E). Secure each bolt with a 5/16 lock nut.
5. Install the MDA Assembly onto the mower deck, place one rubber washer on each stud and spin on the Boot Plate Clamp Knobs over the mounting bolts. (Fig. 5)
6. Connect the hose collar to the MDA with the latches and cut the hose length as described in your Owner's Manual. That's it, your finished!

Safety Note:

If you remove the Mower Deck Adapter later, you MUST re-install the grass deflector.



COMPONENT LIST

PART NO.	NAME	QTY
01-02-143	Standard Boot w/strikes	1
05-02-143	Standard Boot w/strikes - XL	1
06-02-143	Standard Boot w/strikes - Z-10	1
01-01-150	5/16-18 x 1.5 full thread bolt	2
01-01-151	5/16-18 Nylon lock nut	4
01-01-152	5/16 Washer	2
01-01-171	5/16-18 x 1 Bolt	4
01-01-175	5/16 Fender washer	2
01-01-291	Clamp Knob - Boot Plate	2
01-01-573	S42 Boot Plate	1
01-01-1437	T50 Bracket	1
01-01-1863	Spacer	2
01-01-1990	Rubber washer	2
01-02-564	Standard strike w/hardware	3
01-02-142	8" x 8" Collar complete - green	1
01-02-486	7" x 8" Collar complete	1
05-02-080	8" x 8" Collar complete - yellow	1
06-02-080	10" x 10" Collar complete	1
08-02-080	8" x 6" Collar complete	1