

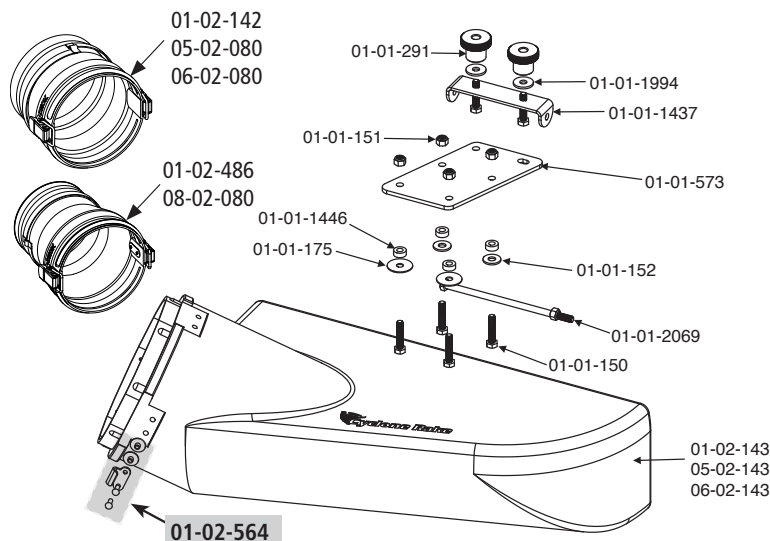
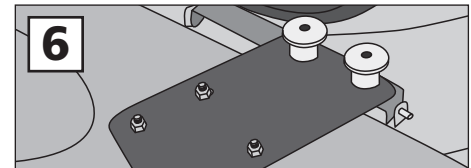
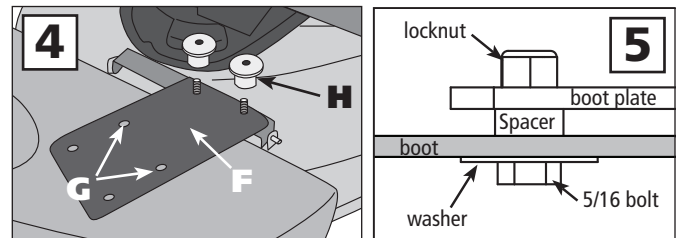
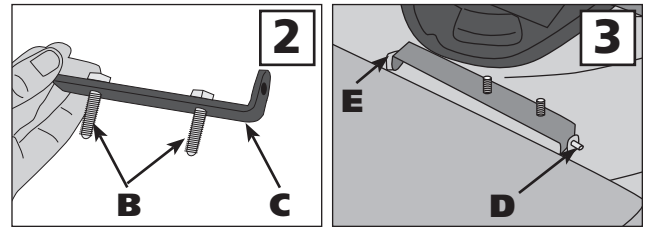
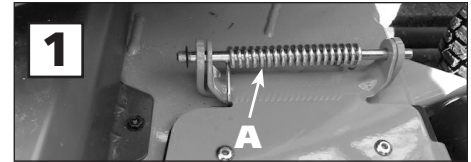
Assembly and Installation

This Mower Deck Adapter (MDA) is designed to work with several mower deck designs. The MDA does not need an airtight fit to deliver exceptional vacuum performance. It simply needs to be installed in front of the opening on the mower deck. Follow the instructions below to install.

1. Remove the grass deflector from the mower by removing the pivot rod and spring (A). You may have to break off the steel spring washer with pliers to get the pivot rod free. Don't worry about this. The 7-inch bolt and nylon lock nut we supply will work perfectly in place of the pivot rod to re-install the grass deflector in the future (Fig. 1).
2. Install two 5/16-18 x 1.5 bolts (B) into the T42 Bracket (C) (Fig. 2). Then place the T42-Bracket (C) with the studs facing up onto the mower and secure with the 7-inch bolt (D) and nylon lock nut (E) (Fig. 3).
3. Position the S42-Boot Plate (F) over the threaded studs in the T42 Bracket. Spin on the Boot Plate Clamp Knobs (H) (Fig. 4).
4. Hold the boot snugly against the lower surface of the S42 Boot Plate and also against the deck opening. While holding the boot in place, mark the hole locations onto the boot with a marker pen. Loosen the Clamp Knobs and remove the Boot Plate from the mower deck.
5. Place the boot on a stable surface. Using the Boot Plate as a template, drill one 5/16" hole through the boot and drop a bolt through the hole temporarily to keep the plate lined up. Repeat the process until all the holes have been drilled.
6. First, install two 5/16 x 1.5 inch bolts, each with a small washer, up through the inside of the boot closest opening of the boot (G) (Fig.4). Then install two more 5/16 x 1 inch bolts each with a 5/16 fender washer up through the remaining holes. Add one TC-Spacer on each bolt, on top of the boot. Then place the S42 Boot Plate on top of the spacers and secure each bolt with a 5/16 lock nut (Fig.5). Tighten firmly.
7. Install the MDA Assembly onto the mower deck, place one rubber washer on each stud and spin on the Boot Plate Clamp Knobs over the mounting bolts (Fig. 6).
8. Connect the hose collar to the MDA with the latches and cut the hose length as described in your Owner's Manual. **That's it, your finished!**

Safety Note:

If you remove the Mower Deck Adapter later, you MUST re-install the grass deflector.



COMPONENT LIST

PART NO.	NAME	QTY
01-02-143	Standard Boot w/strikes	1
05-02-143	Standard Boot w/strikes - XL	1
06-02-143	Standard Boot w/strikes - Z-10	1
01-01-150	5/16-18 x 1.5 full thread bolt	6
01-01-151	5/16-18 Nylon lock nut	5
01-01-152	5/16 Washer	2
01-01-175	5/16 Fender washer	2
01-01-291	Clamp Knob - Boot Plate	2
01-01-573	S42 Boot Plate	1
01-01-1437	TC-Bracket	1
01-01-1446	TC-Spacer	4
01-01-1990	Rubber washer	2
01-01-2069	5/16-18 x 7 Hex bolt	1
01-02-564	Standard strike w/hardware	3
01-02-142	8" x 8" Collar complete - green	1
01-02-486	7" x 8" Collar complete	1
05-02-080	8" x 8" Collar complete - yellow	1
06-02-080	10" x 10" Collar complete	1
08-02-080	8" x 6" Collar complete	1