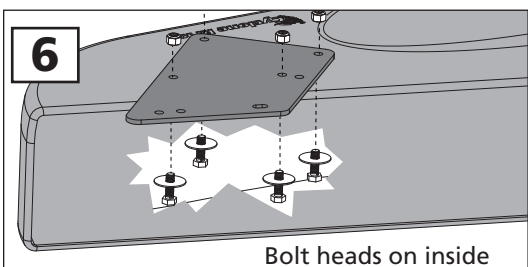
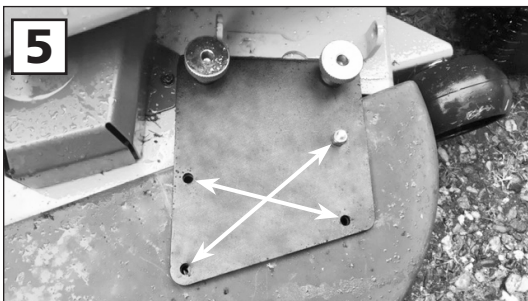
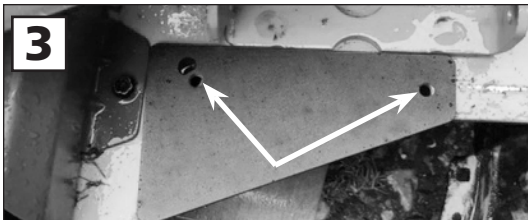
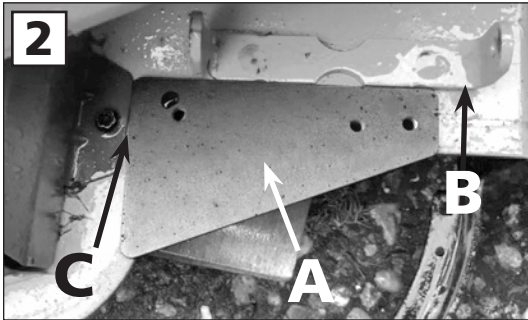
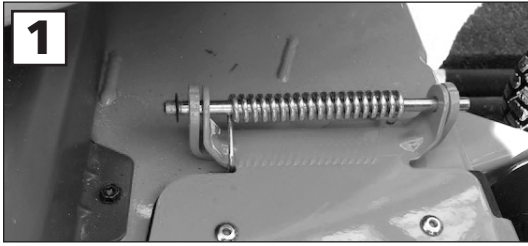


Assembly and Installation

This Mower Deck Adapter (MDA) is designed to work with several mower deck designs. The MDA does not need an airtight fit to deliver exceptional vacuum performance. It simply needs to be installed in front of the opening on the mower deck. Follow the instructions below to install.



Safety Note:
If you remove the Mower Deck Adapter later, you MUST re-install the grass deflector.

1. Remove the grass deflector from the mower by removing the pivot rod and spring. You may have to break off the steel spring washer with pliers to get the pivot rod free. Don't worry about this. The 7-inch bolt and nylon lock nut we supply will work perfectly in place of the pivot rod to re-install the grass deflector in the future. (Fig. 1)
2. Place the HC 48 deck plate (a) on to the mower as shown. It will but up against the pivot bracket (b) and up against the belt cover (c). (Fig. 2).
3. Mark the two holes onto the mower deck with a marker pen. Then, drill both 5/16" holes for the mounting bolts.
4. Push two 5/16" x 1.5" bolts each with a 5/16" washer up through the bottom of the mower deck and screw them into the threaded holes in the HC 48 deck plate. You will now have two threaded studs protruding up from your mower deck. (Fig. 4)
5. Drop the HC 48 boot plate over the threaded studs and spin on the Boot Plate Clamp Knobs. Position the boot under the boot plate and flush against the deck opening. While holding the boot in place, mark the four bolt hole positions with a marker pen. (fig 5)
6. Loosen the Clamp Knobs and remove the Boot Plate from your mower deck. Place the boot on a stable surface. Using the Boot Plate as a template, drill four 5/16" holes through the boot in the four bolt positions you marked. The best way is to first drill one hole, and then drop a bolt through the hole temporarily to keep the plate lined up. Repeat the process until all holes have been drilled. Install the mounting bolts and tighten. The bolt heads should be on the inside to avoid blocking the boot opening. (Fig 6).
7. Install the MDA onto the mower deck. Place one rubber washer on each stud. Spin on the Boot Plate Clamp Knobs and tighten.
8. Attach the hose collar onto the MDA with the latches provided. Cut the hose to length as described in your Cyclone Rake Owner's Manual

That's it. You're finished.

Parts list on reverse.

COMPONENT LIST

MDA-039

PART NO.	NAME	QTY
01-02-143	Standard Boot w/strikes	1
05-02-143	Standard Boot w/strikes - XL	1
06-02-143	Standard Boot w/strikes - Z-10	1
01-01-150	5/16-18 x 1.5 Full thread bolt	2
01-01-151	5/16-18 Nylon lock nut	5
01-01-152	5/16 Washer type A series W	3
01-01-171	5/16-18 x 1" Hex bolt	4
01-01-175	5/16 Fender washer	3
01-01-291	Clamp knob - Boot Plate	2
01-01-1990	Rubber washer	2
01-01-2067	HC 48 Deck Plate	1
01-01-2068	HC 48 Boot Plate	1
01-01-2069	5/16-18x7" Hex bolt	1
01-02-564	Standard strike w/hardware	3
01-02-142	8" x 8" Collar complete - green	1
01-02-486	7" x 8" Collar complete	1
05-02-080	8" x 8" Collar complete - yellow	1
06-02-080	10" x 10" Collar complete	1
08-02-080	8" x 6" Collar complete	1

