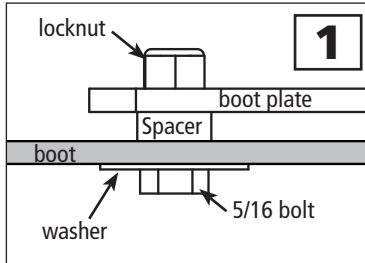


Assembly and Installation

This Mower Deck Adapter (MDA) is designed to work with several mower deck designs. The MDA does not need an airtight fit to deliver exceptional vacuum performance. It simply needs to be installed in front of the opening on the mower deck. Follow the instructions below to install.

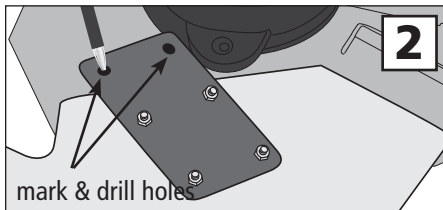
Safety Note:
If you remove the Mower Deck Adapter later, you MUST re-install the grass deflector.



1. Remove grass deflector from mower by removing the pivot rod and spring assembly. (Caution the spring is under extreme tension.) Save the parts so that you can re-install it later.

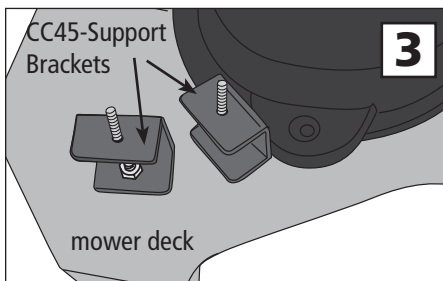
2. Install the four 5/16 x 1.5 inch bolts, each with a 5/16 fender washer, up through the inside of the boot, place one spacer on each bolt. Then, place the boot plate on top and secure with the 5/16 nylon lock nuts. (Fig. 1)

3. Place the entire boot plate assembly onto the mower deck, checking for proper coverage of the deck opening. Mark the location of the holes needed, for the CC45 support brackets, onto the deck with a marker pen.



4. Drill two 3/8" holes for the mounting bolts. (Fig. 2)

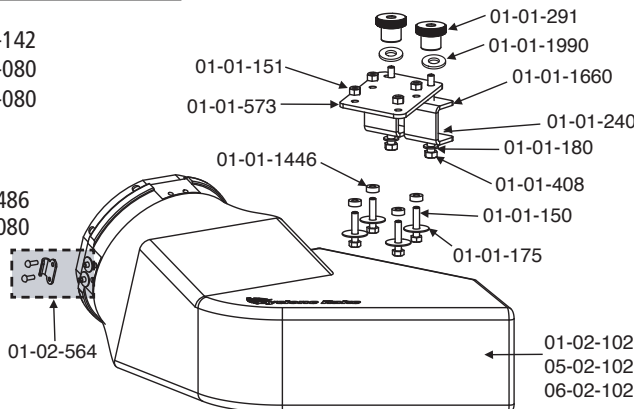
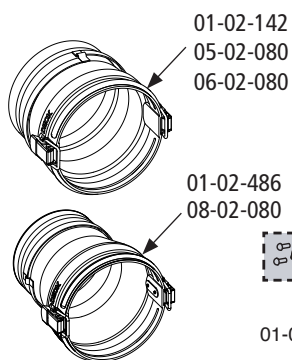
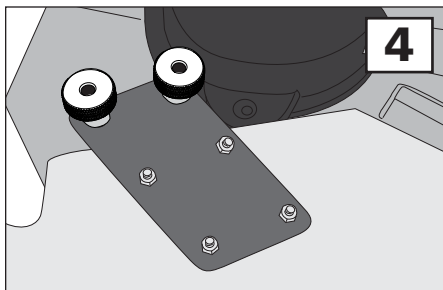
5. Place the brackets on top of the deck. Push the two 3/8 -16 x 1-inch bolts with washers up through the bottom of the mower deck and through the lower portion of each CC45 Support Bracket and fasten with the 3/8 lock nuts. Then, install two 5/16-18 x 1.5 full threaded bolts up through the top part of the CC45 Support Bracket. You will now have two threaded studs protruding up from your mower deck. (Fig. 3)



6. Install the MDA assembly onto the mower deck. Place one rubber washer on each stud and spin on the Boot Plate Clamp Knobs. Tighten firmly. (Fig 4)

7. Connect the hose collar to the MDA with the latches provided. Cut the hose to length as described in your owner's manual.

That's it. You're finished.



COMPONENT LIST MDA-038

PART NO.	NAME	QTY
01-02-102	Special Boot w/strikes	1
05-02-102	Special Boot w/strikes - XL	1
06-02-102	Special Boot w/strikes - Z-10	1
01-01-150	5/16-18 x 1.5 full thread bolt	6
01-01-151	5/16-18 Nylon lock nut	4
01-01-175	5/16 Fender washer	4
01-01-180	3/8 Washer	2
01-01-240	3/8-16 Nylon lock nut	2
01-01-291	Clamp knob - Boot Plate	2
01-01-408	3/8-16 x 1 Hex bolt	2
01-01-573	S42 Boot Plate	1
01-01-1446	Spacer	4
01-01-1660	CC45 Support Bracket	2
01-01-1990	Rubber washer	2
01-02-564	Standard strike w/hardware	3
01-02-142	8" x 8" Collar complete - green	1
01-02-486	7" x 8" Collar complete	1
05-02-080	8" x 8" Collar complete - yellow	1
06-02-080	10" x 10" Collar complete	1
08-02-080	8" x 6" Collar complete	1