

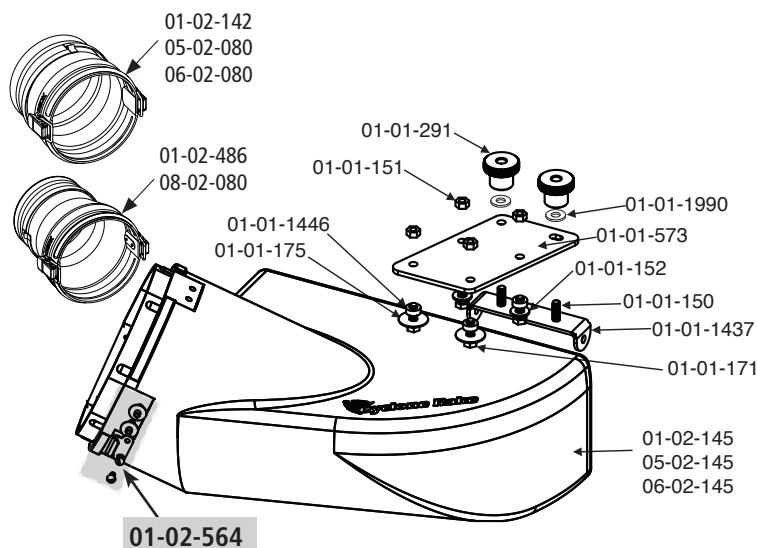
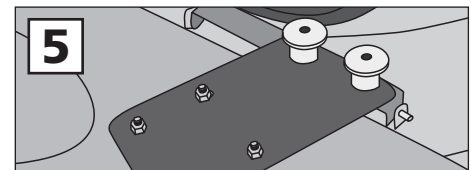
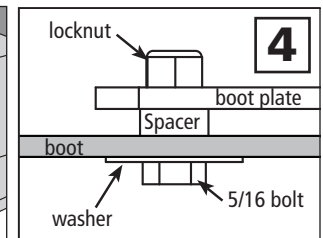
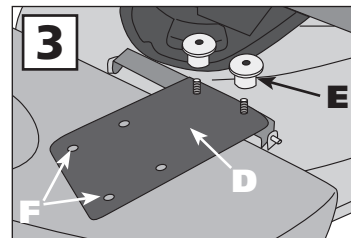
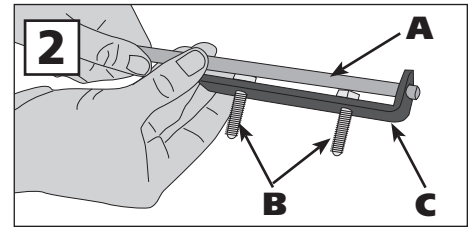
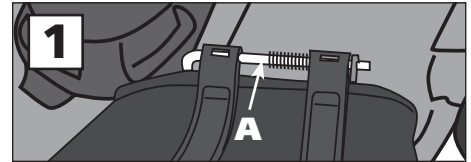
Assembly and Installation

This Mower Deck Adapter (MDA) is designed to work with several mower deck designs. The MDA does not need an airtight fit to deliver exceptional vacuum performance. It simply needs to be installed in front of the opening on the mower deck. Follow the instructions below to install.

1. Remove the grass deflector from your mower. To remove the deflector, loosen the nut located on the underside of the mower deck at the bottom of the deflector pin (A). (Fig. 1)
2. Install two 5/16-18 x 1.5 bolts (B) into the T-50 Bracket (C). Then insert the deflector pin (A) through the T50-Bracket (C). With the bolts positioned toward the front of the mower, reattach the deflector pin and bracket back onto the mower deck and tighten securely. (Fig. 2) You will now have two threaded studs protruding up from the bracket.
3. Position the S42-Boot Plate (D) over the threaded studs in the T50-Bracket. Spin on the Boot Plate Clamp Knobs (E) (Fig. 3)
4. Hold the boot snugly against the lower surface of the S42 Boot Plate and also against the deck opening. While holding the boot in place, mark the hole locations onto the boot with a marker pen. Loosen the Clamp Knobs and remove the Boot Plate from the mower deck.
5. Place the boot on a stable surface. Using the Boot Plate as a template, drill one 5/16" hole through the boot and drop a bolt through the hole temporarily to keep the plate lined up. Repeat the process until all the holes have been drilled.
6. First, install two 5/16 x 1 inch bolts, each with a small washer, up through the inside of the boot (F). Then install two more 5/16 x 1 inch bolts each with a 5/16 fender washer up through the remaining holes. Add one TC-Spacer on each bolt, on top of the boot. Then place the S42 Boot Plate on top of the spacers and secure each bolt with a 5/16 lock nut. (Fig. 4) Tighten firmly.
7. Install the MDA Assembly onto the mower deck, place one rubber washer on each stud and spin on the Boot Plate Clamp Knobs over the mounting bolts. (Fig. 5)
8. Connect the hose collar to the MDA with the latches and cut the hose length as described in your Owner's Manual. That's it, your finished!

Safety Note:

If you remove the Mower Deck Adapter later, you MUST re-install the grass deflector.



COMPONENT LIST

PART NO.	NAME	QTY
01-02-145	Short Boot w/strikes	1
05-02-145	Short Boot w/strikes - XL	1
06-02-145	Short Boot w/strikes - Z-10	1
01-01-150	5/16-18 x 1.5 full thread bolt	2
01-01-151	5/16-18 Nylon lock nut	4
01-01-152	5/16 Washer	2
01-01-171	5/16-18 x 1 Bolt	4
01-01-175	5/16 Fender washer	2
01-01-291	Clamp Knob - Boot Plate	2
01-01-573	S42 Boot Plate	1
01-01-1437	T50 Bracket	1
01-01-1446	TC-Spacer	4
01-01-1990	Rubber washer	2
01-02-564	Standard strike w/hardware	3
01-02-142	8" x 8" Collar complete - green	1
01-02-486	7" x 8" Collar complete	1
05-02-080	8" x 8" Collar complete - yellow	1
06-02-080	10" x 10" Collar complete	1
08-02-080	8" x 6" Collar complete	1