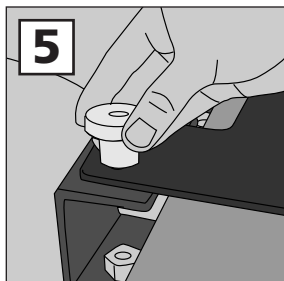
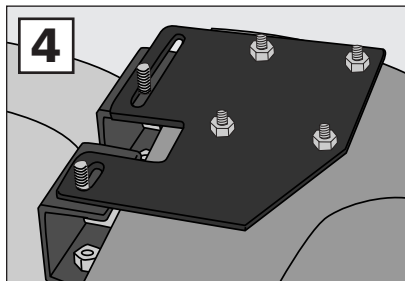
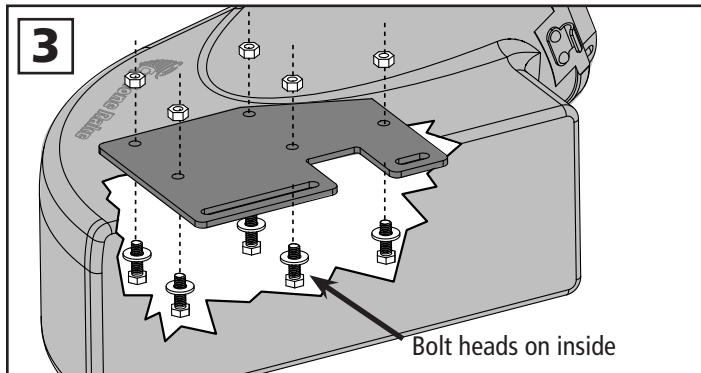
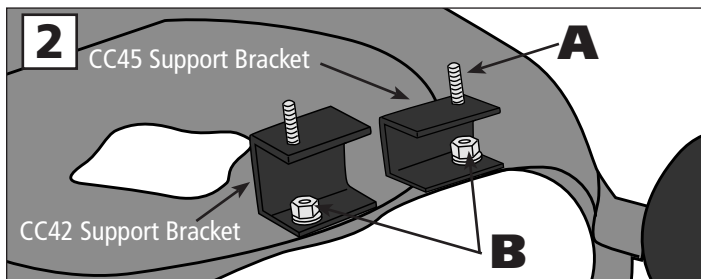
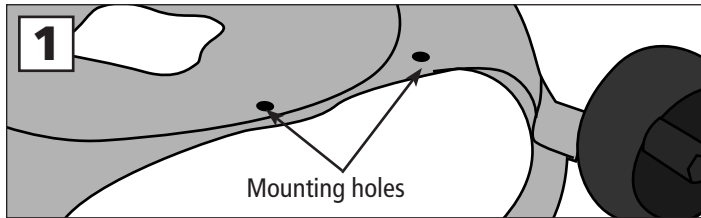


Assembly and Installation

This Mower Deck Adapter (MDA) is designed to work with several mower deck designs. The MDA does not need an airtight fit to deliver exceptional vacuum performance. It simply needs to be installed in front of the opening on the mower deck. Follow the instructions below to install.



1. Remove the hinged grass deflector from your mower deck to expose the deck opening and deflector mounting holes.
2. Screw one 5/16-18 x 1-inch bolt (A) up through the top of each CC bracket. Attach the CC42 and CC45 Support Brackets to your mower deck using the 3/8 x 1 inch bolts, washers and lock nuts (B). The bolts should be installed from the bottom in the holes left by the grass deflector.
3. Install the MOD Boot Plate onto the MDA boot using four the four 5/16 x 1-inch bolts, each with a 5/16 fender washer, up through the inside of the boot and the boot plate. Secure each with a 5/16 nylon lock nut.
4. Position the MDA in front of your mower deck and lower the slotted openings in the Boot Plate over the two 5/16 x 1 inch hex bolts installed on the upper surface of the Support Brackets.
5. Place one rubber washer on each stud. Spin on the Boot Plate Clamp Knobs. Connect the hose collar onto the MDA with the latches and cut the hose to length as described in your owner's manual if needed.

That's it you're finished!

Safety Note:
If you remove the Mower Deck Adapter later, you MUST re-install the grass deflector.

Note: Parts List on reverse.

COMPONENT LIST

MDA-013

PART NO.	NAME	QTY
01-02-145	Short Boot w/strikes	1
05-02-145	Short Boot w/strikes - XL	1
06-02-145	Short Boot w/strikes - Z-10	1
01-01-151	5/16-18 Nylon lock nut	4
01-01-171	5/16-18 x 1 Hex bolt	6
01-01-175	5/16 Fender washer	4
01-01-180	3/8 Washer	4
01-01-291	Clamp Knob - Boot Plate	2
01-01-240	3/8-16 Nylon lock nut	2
01-01-408	3/8-16 x 1 Hex bolt	2
01-01-1344	MOD Boot Plate	1
01-01-1397	CC42 Support Bracket	1
01-01-1660	CC45 Support Bracket	1
01-01-1990	Rubber washer	2
01-02-564	Standard strike w/hardware	3
01-02-142	8" x 8" Collar complete - green	1
01-02-486	7" x 8" Collar complete	1
05-02-080	8" x 8" Collar complete - yellow	1
06-02-080	10" x 10" Collar complete	1
08-02-080	8" x 6" Collar complete	1

