

## Installation Instructions

The Cyclone Rake 208W Special Hitch is designed to fit multiple mower types. To install the hitch, follow the instructions below.

1. Place the mower on a flat level surface, such as a concrete floor.
2. **Fig. 1:** Remove your existing drawbar hitch (A) from the rear of your tractor by removing the retaining ring, spacers and shaft (B). Save all the parts, some will be used in the installation of the special hitch.
3. **Fig.2:** Place the WH Top Brackets (3) on top of the axle, one on each side.
4. **Fig. 3:** Install the 208W-Weldment (1) by placing the arms over the Top Brackets. Line up the bolt holes with the Top Brackets. Then drop the 3/8 x 4.25-inch hex bolts, 2 on each side, through the weldment arms and Top Brackets.
5. Next, Install the WH Lower Plates (4) underneath the axle, one on each side and loosely fasten with 3/8 washers and 3/8-16 nylon lock nuts onto the 4.25-inch hex bolts.

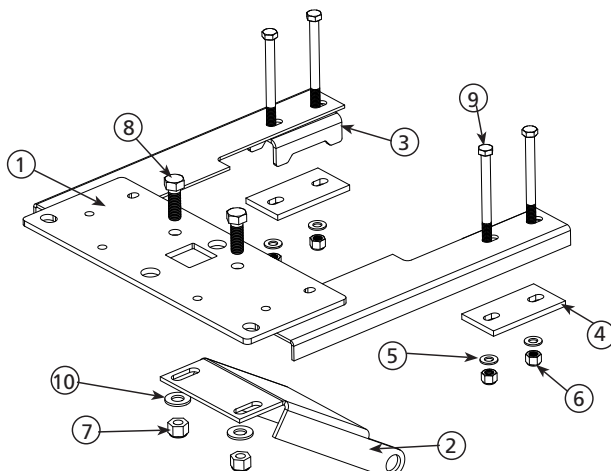
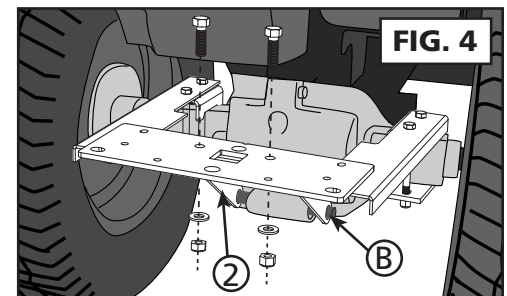
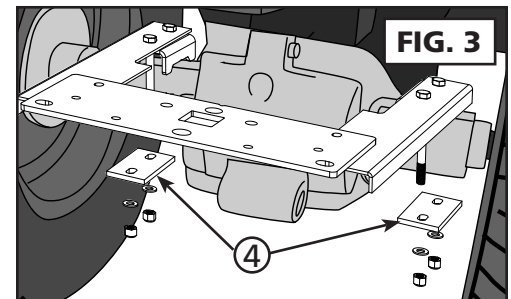
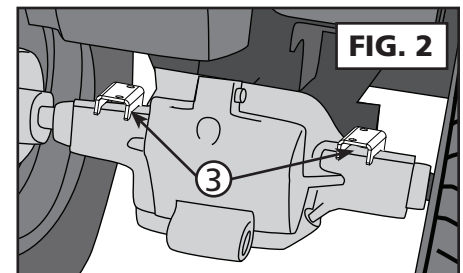
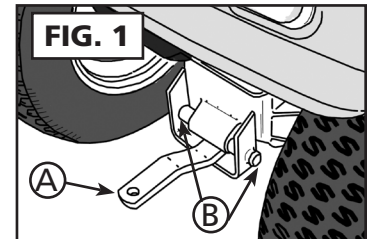
**Note:** If you have the front plow attachment on your tractor you will not need the lower plates. Install washers and lock nuts onto the 4.25 hex bolts and loosely fasten.

6. **Fig. 4:** Line up the WH Support Bracket (2) with the hitch area on the rear of the mower. Attach the arms of the support bracket using the hardware that was removed in step 2 (B: spacers, shaft and retaining ring). It will reinstall the way it was removed.
7. Lift up the Support Bracket and attach it to the 208W-Weldment using the 2, 1/2 x 1.5 inch hex bolts, 1/2 washers and 1/2-13 nylon lock nuts. Tighten.
8. Tightly fasten all the hardware that was installed on the axle of the mower in steps 4 & 5.

That's it. Your 208W Special Hitch installation is complete. **To finish the assembly of your Cyclone Rake, please return to your Cyclone Rake Owner's Manual now.**

**Note:** Be sure to check all the hitch bolts before each use to make sure everything is tight.

**User Tip:** A small amount of grease on the Cyclone Rake hitch pins will help minimize hitch bar wear over time.



### 208W Special Hitch COMPONENT LIST

KEY#	PART#	NAME	QTY
1		208W Alternate Weldment	1
2		WH Support bracket	1
3		WH Top bracket	2
4		WH Lower plate	2
5	01-01-180	3/8 Washer	4
6	01-01-240	3/8-16 Nylon lock nut	4
7	01-01-823	1/2-13 Nylon Lock nut	2
8	01-01-963	1/2-13 x 1.5 inch Hex Bolt	2
9	01-01-1840	3/8-16 x 4.25 inch Hex bolt	4
10	01-01-1844	1/2 Washer	2