

Installation Instructions

The Cyclone Rake 208-020 special hitch is designed to fit multiple mower types. To install the hitch, follow the instructions below.

1. Place the mower on a flat level surface, such as a concrete floor and remove the black weights from the bumper if you have them
3. Fig 1. Starting on either side of the mower, remove the three bolts holding the engine guard to the frame of the mower.
4. Fig. 2. Attach and secure the side weldments using the 2 M8 bolts and one M12 bolt and the M8 and M12 locknuts provided.

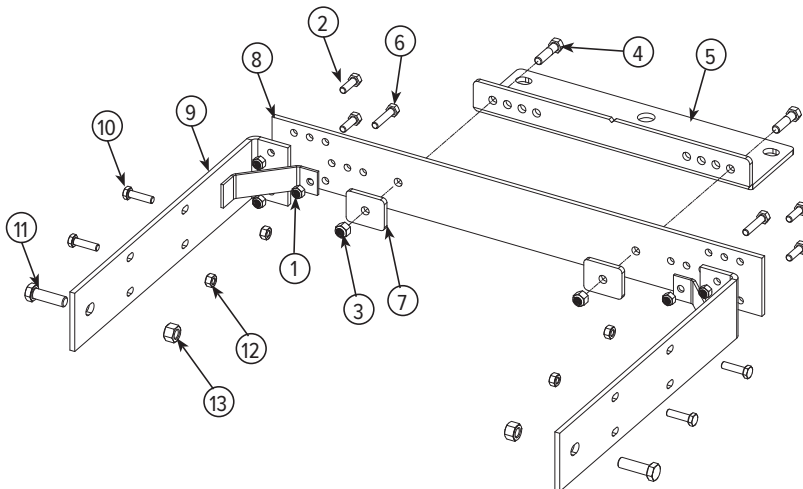
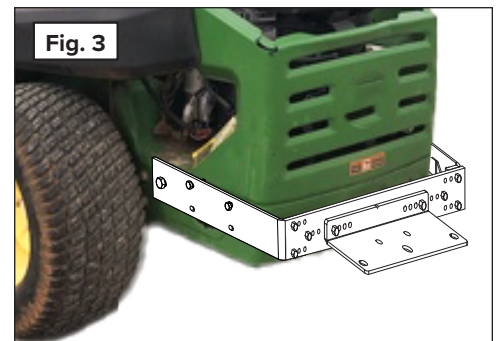
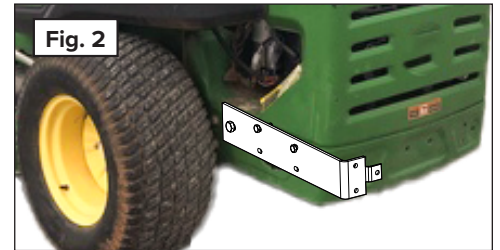
Repeat this process on the other side of the mower.

5. Fig 3. Attach the rear plate to each end of the side weldment using the 5/16" x 1 inch bolts and secure with the 5/16" locknuts provided.
6. Fig 3. Attach the 90 degree hitch bar to the rear plate using the 3/8 x 1.5 inch bolts, hitch bar washers, and nylon lock nuts provided and tighten securely.

To finish the assembly of your Cyclone Rake, please return to your Owner's Manual now.

Note: Check the bolts before each use to make sure everything is tight.

User Tip: A small amount of grease on the Cyclone Rake hitch pins will help minimize hitch bar wear over time.



208-020 Special Hitch

COMPONENT LIST

KEY #	PART #	NAME	QTY
1	01-01-151	5/16-18 Lock nut	6
2	01-01-171	5/16-18 x 1 inch Hex bolt	4
3	01-01-240	3/8-16 Lock nut	2
4	01-01-410	3/8-16 x 1.5 inch Hex bolt	2
5	01-01-870	90° Hitch Bar	1
6	01-01-1335	5/16-18 x 1.5 inh Hex bolt	2
7	01-01-1434	Square washer	2
8	01-01-1999	TSS Rear Hitch plate	1
9	01-01-2204	JDZ Hitch side plate w/strap	2
10	01-01-2205	8 x 1.25 x 30 Hex head screw	4
11	01-01-2006	12 x 1.75 x 40 Hex head screw	2
12	01-01-2207	8 x 1.25 Hex nut	4
13	01-01-2208	12 x 1.75 Hex nut	2